

HISTORY

AND

DESTINY

Eveleth

ITS

INCEPTION

AND

EVOLUTION



JOHN SAARI, Pres. and Treas. F. W. ROBLIN, Sales Manager
J. S. SAARI, Vice-Pres., Eveleth, Minn.

BRANCH OFFICES
NEW YORK
CHICAGO
CANTON, OHIO
MINNEAPOLIS
EVELETH, MINN.

SAARI-ROBLIN LUMBER CO.

PACIFIC COAST LUMBER

AND

WESTERN PINE

NORTHWESTERN BANK BUILDING
PORTLAND, OREGON

Compliments of the

**J. J. LETOURNEAU PRINTING
COMPANY**

DULUTH, - MINNESOTA

HIGH GRADE PRINTERS AND BINDERS

This book is an example of our
work. You are to be the judge

May we give you estimates on your work
Call on us at anytime

LOVIT

**HIGH GRADE CARBONATED BEVERAGES
ALL PASTEURIZED**

IN ASSORTED FLAVORS

THE REX COMPANY

SUCCESSORS TO

Duluth Brewing & Malting Company

DULUTH, MINN.

PREFACE

Dear Reader:

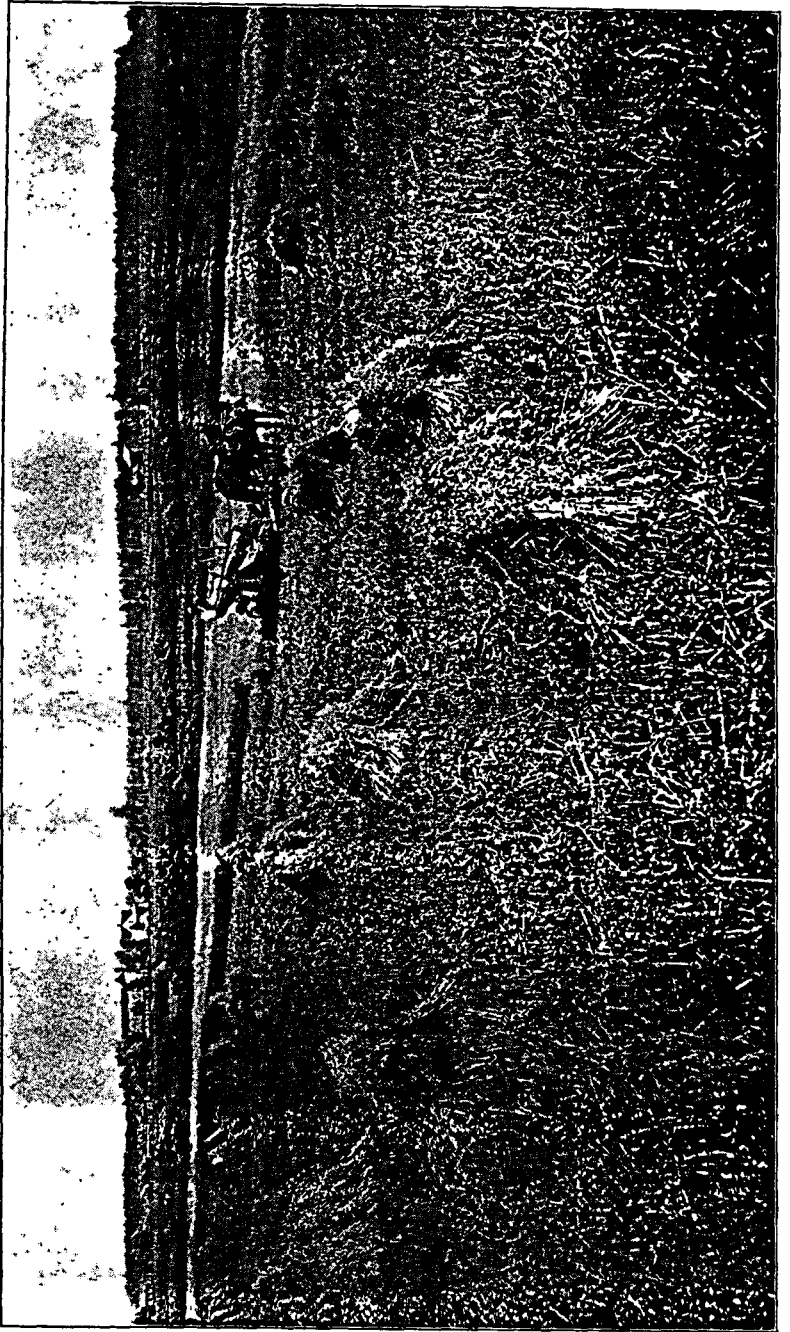
This little booklet of views has been published to answer the numerous inquiries that have been received regarding Eveleth and the adjacent farming country. It has been felt that not only does Eveleth hold a unique position as a center of iron ore mining, surrounded by a fertile country in process of farm development, but that there is a certain spirit of progressiveness in civic affairs which has given the city a leading place among those municipalities which make the city a place for its citizens: With no desire to boast, we, of Eveleth, may say that in city affairs and in our relation to those citizens who are just beyond our borders, Eveleth leads and others follow. As evidence we can cite that Eveleth was the first among the iron ore towns to provide a Farmers' Market, the first to build a fine Auditorium and Armory, the first to have a municipal band giving free public concerts, the first to adopt a plan of Public Recreation, and the first to build a true Recreational Building. Among smaller undertakings which though of less prominence are still of vital importance, we would mention the health provisions which have grown into a regular functioning health department with a qualified medical officer in charge and a city nurse with provision for expanding as occasion demands, a municipal cow pasture, a public abattoir, a carefully guarded water supply with modern filtration plant. Our parks, streets, libraries, and schools reflect the public will to have the best for Eveleth citizens and those who may come to join us. Knowing that we have material advantages as a solid base upon which to build, we invite you to fraternize with us and lend a hand.

EVELETH COMMERCIAL CLUB.

Eveleth, Minnesota, March 15, 1921.

TO the organization, so well organized, so chivalrous, so appreciative of the true booster spirit behind them, as to hold its own against the foremost competition in the United States, this book is sincerely dedicated.

1920 and 1921 the Eveleth Hockey Team won the championship in the United States Hockey League and are matched to play off Cleveland, Ohio for the championship of the entire United States of America.



OAT FIELD, W. F. HAENKE FARM

EVELETH, THE CITY BEAUTIFUL

WHERE MINES AND FARMS MEET

Yes, where mines and farms meet today, but more than a century ago the Indian aborigine had found his way to the country now inhabited by the happy, peace-loving citizens of Eveleth. Here the mightiest nations of the forest met in deadly combat and struggled for the mastery of their dominion. Many and interesting are the stories of the fierce and bloody battles waged on these fair lands. The Chippewas and the Siouxs little suspected that some day the home of their sacred shrine would be a modern city. Had they placed their ear to the ground they might have heard the footsteps of the coming millions; they might have pictured the extensive mines with active operations employing many men; they might have seen beautiful summer homes adorning the bodies of water about Eveleth; their vision would carry large manufacturing plants and factories in which the raw material gathered from the ground is wrought into the necessities of life. The alert eye could even look farther and see under those tepees then circled about the trees, now holding nature's commissary, the thriving farms owned by happy and prosperous tillers of the soil.

Three centuries have now passed since the brave "pale-faces" made their way into our country. In these centuries things have changed. Tepees have become modern residences, canoe factories have been replaced by excellent buildings, and well-laid-out streets.

We are the citizens of three worlds. The world of yesterday, of today, and tomorrow. We live our yesterday with the Indians, our present in a city of 9,000 people. In all today seems bright for Eveleth with opportunity on every hand and a challenge to build, to go forward, to make our place in the sun.

1921



COMMISSIONERS—CITY OF EVELETH

1921

CITY GOVERNMENT

Eveleth operates under a home rule charter adopted as the result of an election held October 7, 1913. The plan is what is known as the commission form of government, in which each member of the council has a certain department under his direct supervision. The city council is composed of the mayor and four commissioners, the present administration being as follows:

Department of Public Health, Sanitation, Police, and General Welfare, MAYOR VICTOR E. ESSLING.

Department of Accounts and Finances, COMMISSIONER ROBERT MEYERS.

Department of Parks, Public Grounds, Buildings, and Fire Protection, COMMISSIONER WILLIAM MURRAY.

Department of Waterworks and Sewers, COMMISSIONER D. A. MURRAY.

Department of Streets and Alleys, COMMISSIONER ANDREW ANDERSON.

It is worth noting that the municipality gives its citizens every consideration for their happiness and wellbeing.

Eveleth is situated on a high elevation of the Mesaba Iron Range in St. Louis county, seventy miles by railroad north of Duluth, the county seat, with good drainage and healthful climate, excellent railroad connections, and train service in every direction. The highest point in Eveleth is 1,018 feet above the level of Lake Superior. The city is surrounded by a belt of iron ore formation from one to two miles wide in every direction except to the northeast.

West and south of the Iron Belt is a sloping timbered plateau country now being rapidly settled for farming.

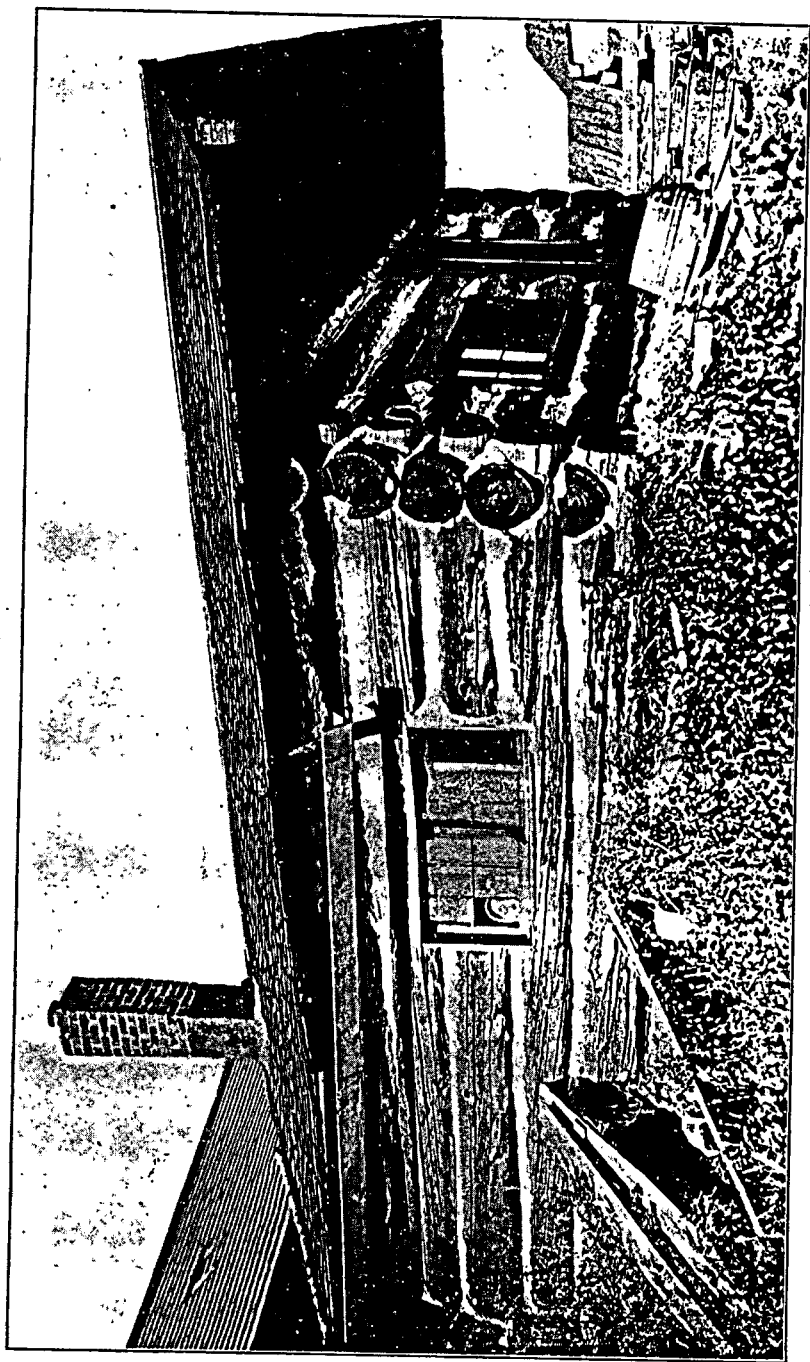
Iron mines and farming are Eveleth assets. Great as are the iron ore deposits, in time the farms will become of equal greatness.

EARLY HISTORY

The most authoritative account of the early history of Eveleth is related by Mr. David T. Adams, one of the early settlers and still a resident, who opened up the Adams mine.

Mr. Adams maintains that ore was found in the Eveleth group of mines as far back as 1883, when his attention was called to the possibility of an iron range existing on the south-eastern slope of the Missaba Heights and the discovery of drift ore on the eastern end of the Range.

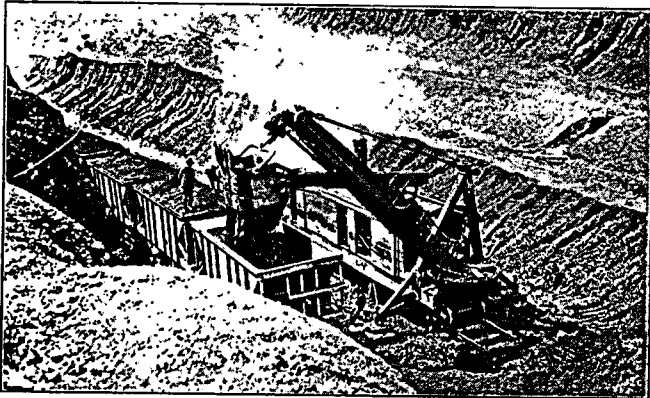
However, the discovery of deposits of ore in the vicinity of Eveleth occurred to Mr. Adams in July, 1892, by means of a spring pole drill, but it was not until the fall of 1892 that the



THE FIRST MINE OFFICE AT EVELETH

Adams Mining Company was formed. Mr. Adams also platted the present townsite of our beautiful and distinguished city of Eveleth with enough of the best ore on the Range surrounding it on two sides to continue it as the most steady and prosperous city on the Range.

The name of Eveleth was adopted in honor of Erwin Eveleth, a timber cruiser employed by Robinson & Flinn, who owned the lands upon which the city is now located.



DIGGING IRON ORE

IRON ORE MINING

Iron ore mining is the primary industry of Eveleth and for the past quarter of a century the Adams, the Cloquet, the Spruce, the Fayal, and Leonidas mines have contributed an important share of the steel used to build our cities' bridges and railroads.

The iron ore mines of Eveleth are operated on the open pit and underground systems. In the open pit the surface is removed and the ore taken out by steam shovel and loaded directly in railroad cars which are formed into trains of 100 cars, each car containing fifty tons of the raw material from which the ore is gathered.

Underground work is carried on by regular mining methods, the two systems being usually combined in the same mine. In 1919, 3,039,355 tons were mined and shipped from this point. Eveleth has the reputation of being an all-the-year-around town, as ore is produced and the employment of men is uniform throughout the year. This has a most steadying effect on all business.

RAILROADS SERVING EVELETH

Three railroads serve the business interests and traveling public of Eveleth—the Duluth, Missabe & Northern, an ore-carrying steam line with three passenger trains daily between Eveleth and Duluth by a most direct route; the Duluth & Iron Range, also steam line and ore-carrying, which connects Eveleth with Gilbert, McKinley, Biwabik, and Aurora to the east, Tower and Ely to the north, and Two Harbors on Lake Superior and also Duluth; and the Mesaba Electric Company, interurban, handling passengers and package freight between Eveleth and a dozen other mining towns on the great Mesaba Range. Plans are now being made for a new union depot to be conveniently located and which will be used by the two steam lines in common.

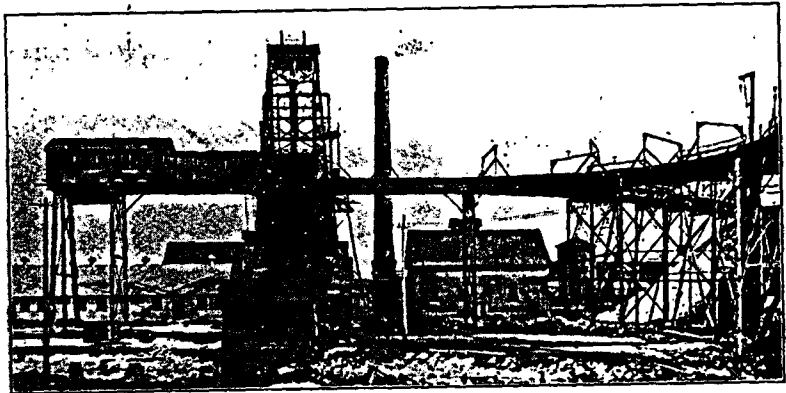
MONTHLY PAYROLL

The mine payroll at present is \$300,000 per month. In addition to this is the school, city contractors, loggers, and commercial payroll, which brings the total of Eveleth's monthly payroll considerably over \$450,000.

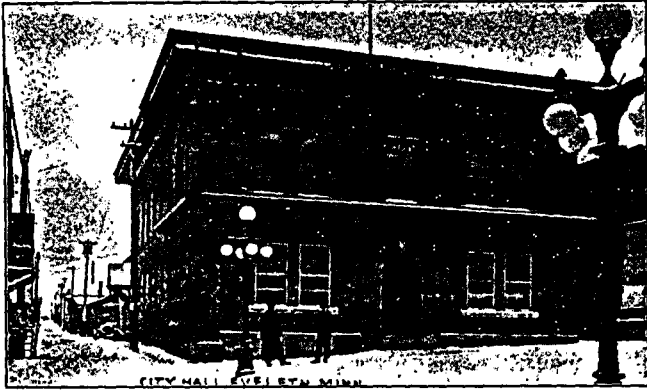
PAVED STREETS

More than ninety-five per cent of the existing streets of Eveleth are paved. Bitulithic pavement is the most common, with a few blocks of creosoted block pavement.

The total yardage completed at this time is 134,041, all of which except 14,241 yards is bitulithic on concrete base. With the exception of six blocks of concrete laid on Grant avenue in 1920, all the work has been done in the last eight years. The city has twelve miles of concrete sidewalks.



SPRUCE NO. 4 MINE



THE CITY HALL

POPULATION, ASSESSED VALUATION, BANK DEPOSITS, ETC.

The population of Eveleth as given by the 1920 government census is 7,025 persons. This does not include the population adjoining Eveleth just outside the city limits. A Commercial club census, taken in October, 1920, gives a total of 9,174.

The assessed valuation of the city is as follows: Real property, including mines, \$17,995,871.00; personal property, \$589,589.00; total, \$18,585,460.00. Tax statements on personal property are mailed out by the County Auditor from Duluth shortly after the first of each year. Statements of real estate taxes are furnished by the same, but only on request.

Eveleth has three important banks, the First National Bank, Miners National Bank, and Peoples State Bank, with deposits of more than two and one-half million dollars.

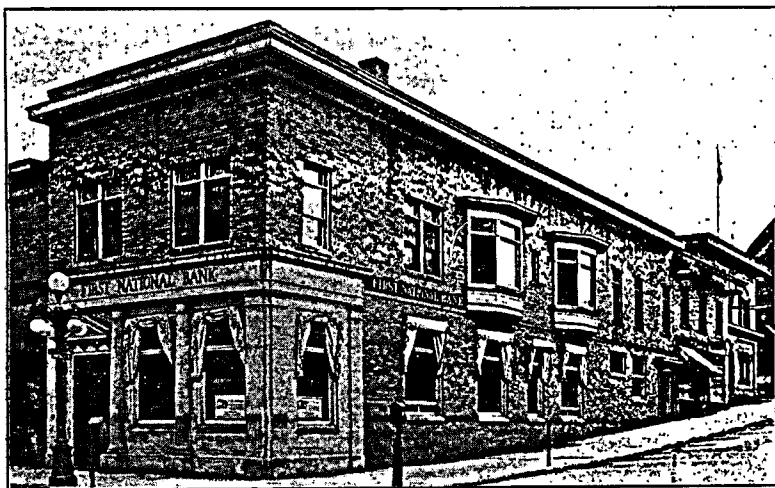
Eveleth is particularly proud of its public buildings, of which views appear in this book. These include the City Hall, which is the administrative center of the city, the City Auditorium, which was also built as an Armory, the Recreational Building, the Public Library, eight large school buildings and a number of small school buildings, a Detention Hospital, Water Works, Public Abattoir, and Public Market Place. The City Hall was built in 1905, the Auditorium in 1912, and the Recreational Building in 1918.



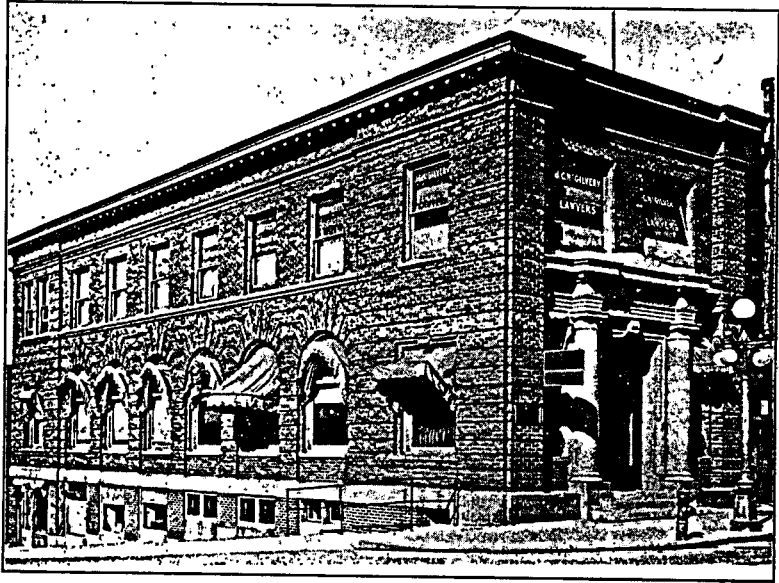
PEOPLES STATE BANK, PETERSON BLDG.

ROADS

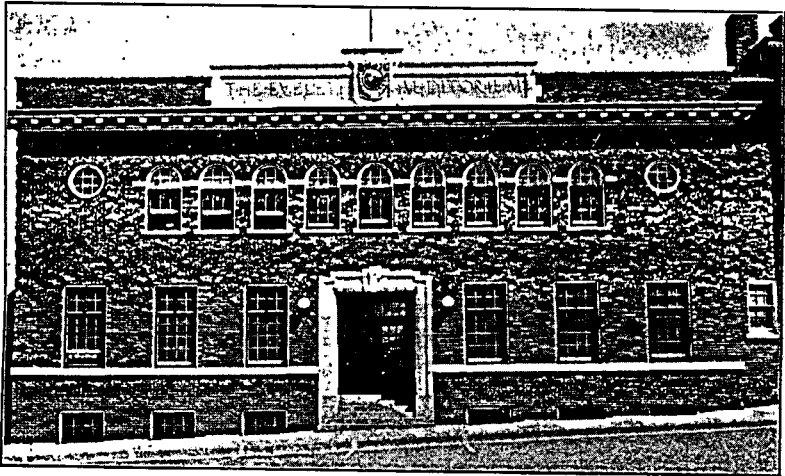
Reference has been made to the numerous good roads around Eveleth. It has been our experience that travelers from other sections speak very highly of all roads in the northern part of the state, especially St. Louis, Itasca, and Lake counties. It is the aim of the Eveleth Commercial club to have a road built on



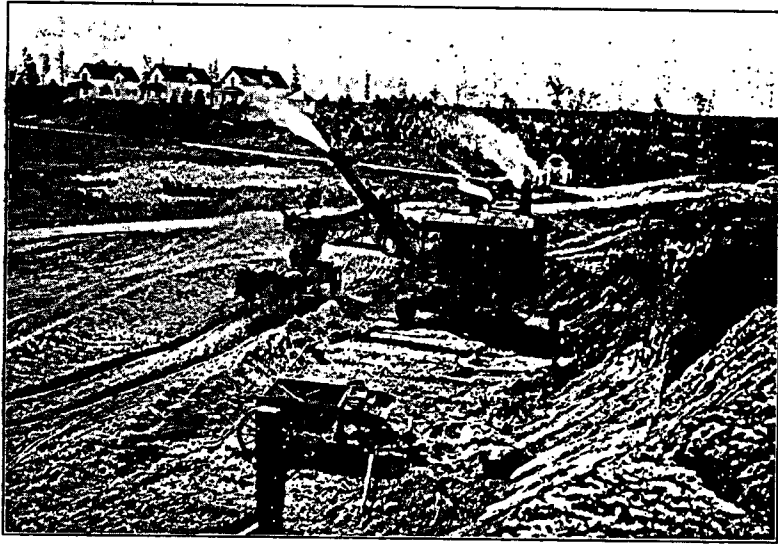
THE FIRST NATIONAL BANK



THE MINERS NATIONAL BANK



EVELETH AUDITORIUM



CONSTRUCTION WORK, STATE HIGHWAY NO. 11

every section line where new land suitable for making farms will be reached.

Eveleth's most important road is the Miller Trunk. This is a direct automobile road from Eveleth to Duluth, covering fifty-six miles. In the past it has been designated as State Highway No. 1. Under a recent amendment to the state constitution it is Route No. 11, passing through Eveleth to Virginia, and thence to International Falls. At present it is being rebuilt preliminary to being given a hard surface eighteen feet wide on a thirty-foot subgrade. Another important road follows a general east and west direction, connecting all the various towns on the Mesaba Range. A new section of this road is being built between Eveleth and Virginia. Most of this section is within the city limits of the two cities and hence is financed accordingly. It will be paved the entire distance, the Eveleth part being already paved.

Other important connecting roads are the Eveleth-Wolf, Eveleth-Peary, Wolf-Iron Junction-Forbes, Town Line Road, the Iron Junction Road, Morrison Road, Bodas Road, and Long Lake Road, which, with branches and feeders, form a complete network in the country surrounding Eveleth.

THE WATER SYSTEM

Water is furnished by a complete system of mains as a municipal function. Water rentals are reasonable and satisfactory to the residents.



GRANT AVENUE

CLEAN STREETS

As the city is built on the side of a hill with a good slope it is always possible to keep the streets clean. A motor driven flusher is used for washing the streets. A force of street sweepers is regularly employed by the city.

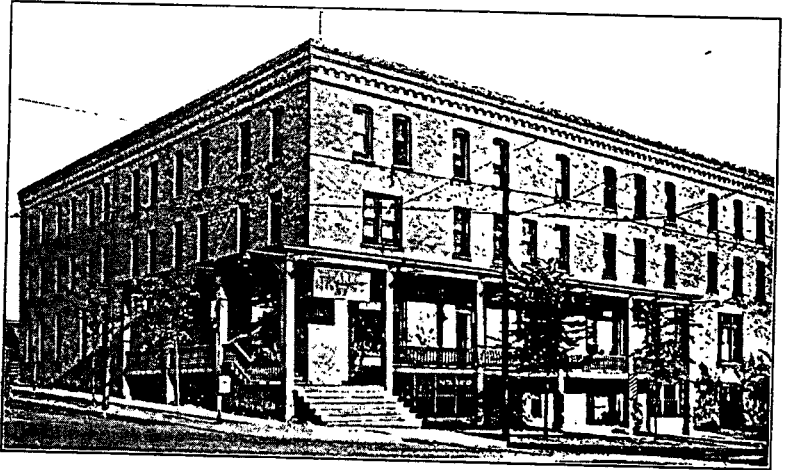
Among the street improvements that will be appreciated by visitors from other towns is the designation of all streets by neat metallic signs on metal posts which have recently been erected by the city authorities. All Eveleth streets are named streets and with very few exceptions these are names of ex-presidents of the United States. The few exceptions comprise Douglas avenue, "A" avenue, "B" avenue, Chandler avenue, North and South Courts, and Park avenue.

SEWERS

The town is well sewered and with the exception of some of the newer localities every house is connected with the main sewer. A contract for additional sewers to complete the Eveleth system will be let in the near future. Ten miles of sanitary sewers and five miles of storm sewers are in use. All Eveleth sewage is treated at sewage disposal plants. In this as in all other municipal features Eveleth is strictly modern and progressive.

HOTELS

Eveleth has one of the best hotels in the Northwest, the Park, situated at the corner of Adams avenue and Pierce street. This is a brick structure built in 1902 by Mr. Edwin McNeil, with the financial backing of a number of the prominent business



THE PARK HOTEL

men of the city. The property is at present owned by the Mesaba Realty & Investment Company and operated under the management of Mr. William J. Cahill. The Park is always a busy place and travelers will find there all the conveniences and comforts desired, as well as first-class meals. The hotel is operated on the American and European plans at \$3.50 per day and up.

TELEPHONE SERVICE

The number of telephones in a city is somewhat of an index to the city's prosperity and activities. The telephone service in



ROAD INTO A SUMMER HOME AT HALF MOON LAKE

Eveleth is furnished by the Northwestern Telephone Exchange Company, who have 1,000 phones in service in the city and vicinity.

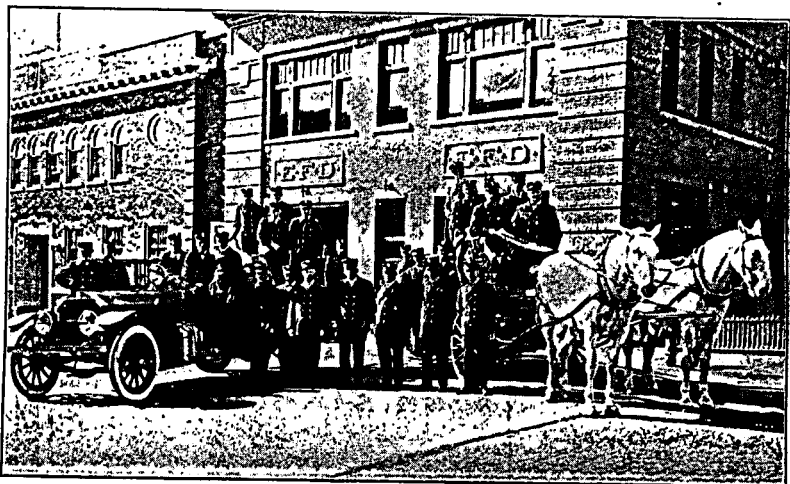
LIGHTING

A most complete lighting system is in use. Ornamental lights on Grant avenue, the main business street, form a beautiful White Way at night. Electrical current for public and private use is furnished by the Minnesota Utilities Company.

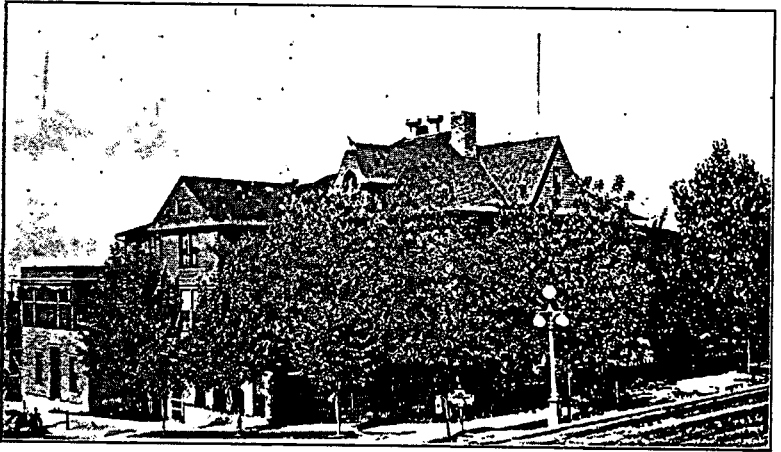
EFFICIENT FIRE DEPARTMENT

Eveleth has a most efficient fire department of twenty-six men, including Chief William Nealon. The department is organized into eight hours' shifts with all men subject to call. The fire hall built in 1912, all brick construction, size 50x120 feet, two stories in height, is admitted to be one of the best designed and best equipped stations in the state. At the present time there are three pieces of apparatus, one being the motor truck and the other two horse drawn. The department will be entirely motorized in the near future. Due to the readiness in which our fire boys respond to every call, Eveleth has never suffered severe fire or conflagration in its history.

This company also furnishes steam for heating purposes. Most business places and a considerable number of residences are connected with the steam mains, obviating the use of individual furnaces for heating.



EVELETH FIRE DEPARTMENT

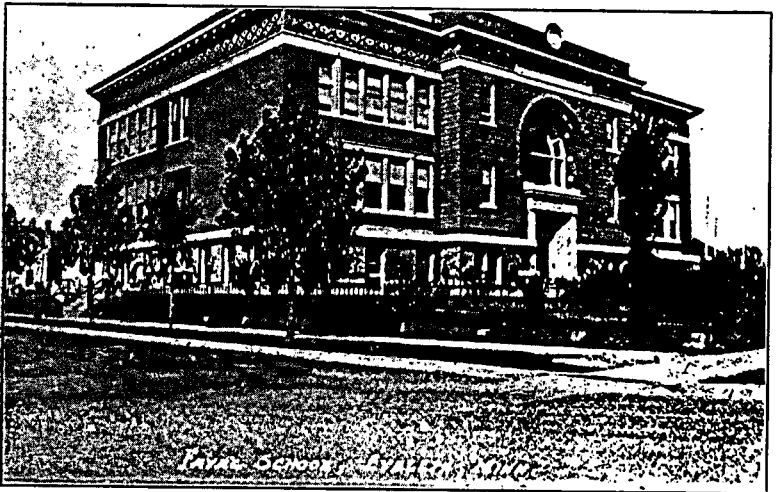


THE MORE HOSPITAL

THE MORE HOSPITAL

This splendid hospital was established in 1895 by Dr. C. W. More, and occupies a ground site of half a block on Grant avenue, in the quiet zone. There are three floors, equipped for the medical and surgical treatment of thirty patients. The hospital staff consists of eight doctors and a corps of trained nurses.

The operating room is on the hospital floor, modernly equipped,



THE FAYAL SCHOOL, EVELETH, MINN.

the equal of many of the hospitals in the state. The laboratory, drug department, X-ray, doctors' offices, business offices, and waiting rooms are on the first floor.

In 1919 there were treated at the More hospital 615 patients, and up to December 1, 1920, 598, which indicates that it is a very busy institution.

SCHOOLS

The schools of Eveleth are organized as Independent School District No. 39, embracing the entire city, also Fayal township. Eight large buildings and a number of smaller buildings are now in use in the district. We have 2,662 school children enrolled with a teaching force of 137 persons. The valuation of school property is now about \$1,000,000.00. The management of the school, entirely separate from that of the city, is under a Board of Education, at present composed of Dr. C. W. More, chairman, J. M. Stearns, clerk, T. H. Davey, treasurer, James A. Robb, W. R. Van Slyke, and C. B. Hoel. Mr. Leslie Tobin is secretary-business manager of the school district.

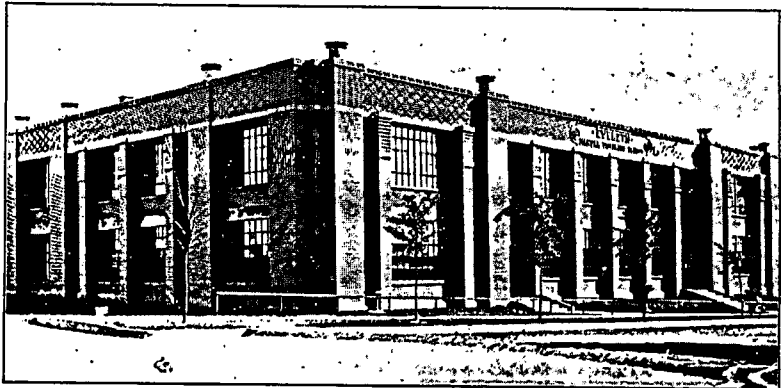
Mr. J. V. Voorhees, the present superintendent, having direct supervision of all school matters, is an experienced educator. He assumed his duties at Eveleth July 15, 1920, coming here from Winona, Minnesota, where he had been in charge of schools for eleven years.

The teaching force is classified as follows:

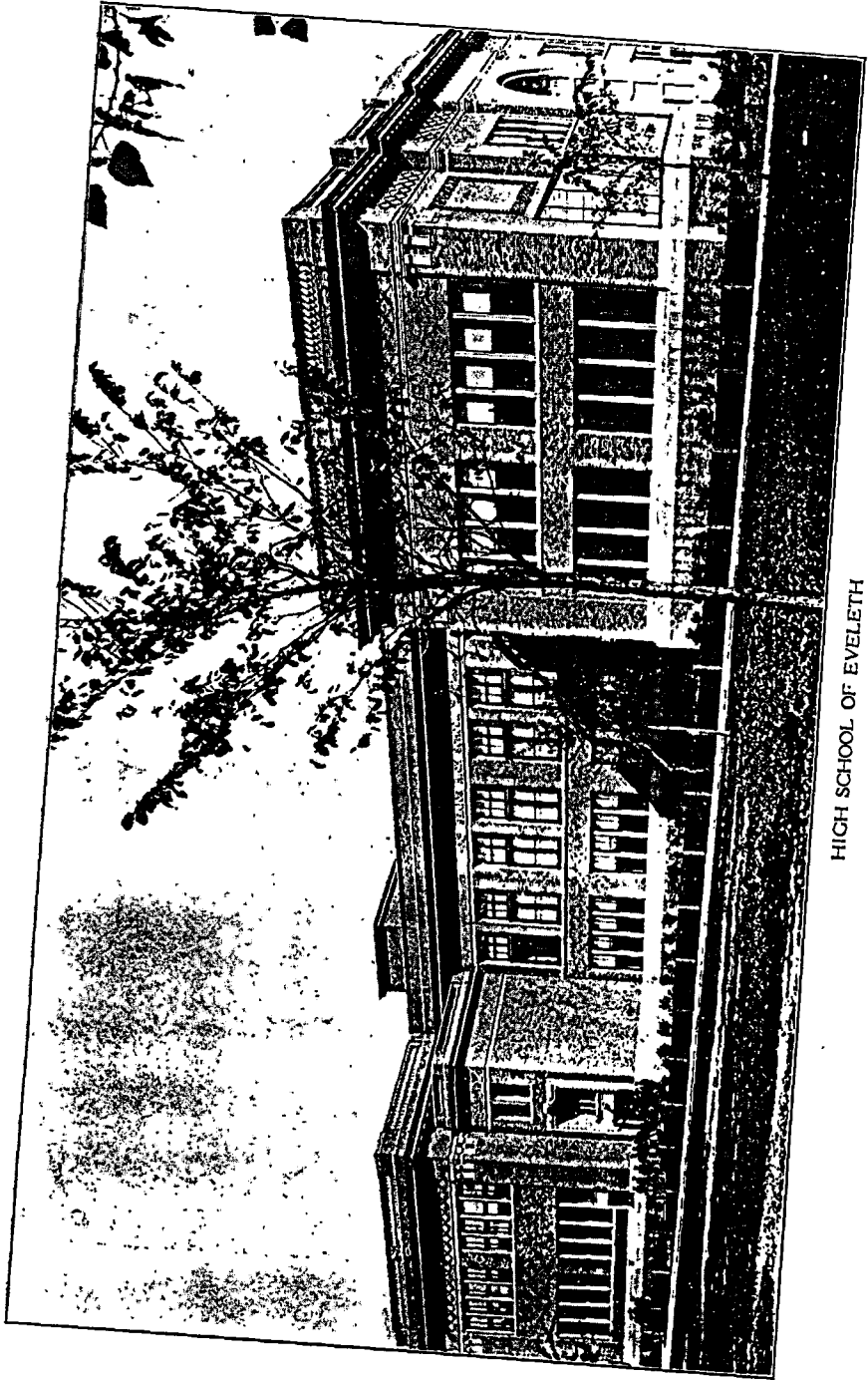
Junior College and Senior High School: One principal and twenty-four teachers.

Junior High School: One principal and seventeen teachers:

Grades: Three principals and sixty-seven teachers, grade and kindergarten.



MANUAL TRAINING SCHOOL



HIGH SCHOOL OF EVELETH

Manual Training: One director and six assistants.

Recreation: One director and three assistants.

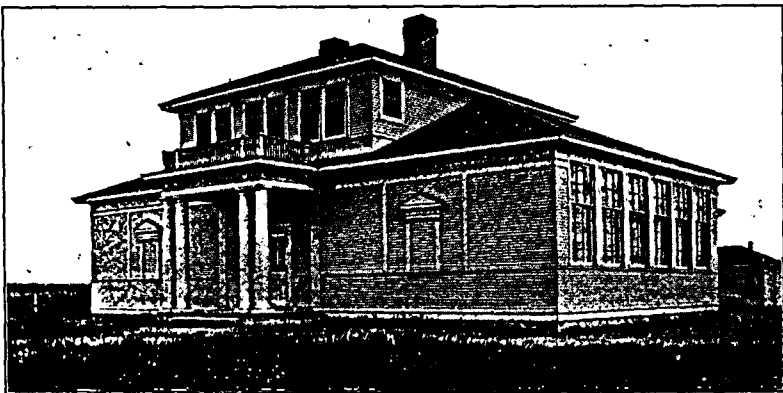
Domestic Arts: One director and four assistants.

Eight supervisors, whose duties embrace upper and lower grades, drawing, penmanship, music, health, and hygiene, are also employed.

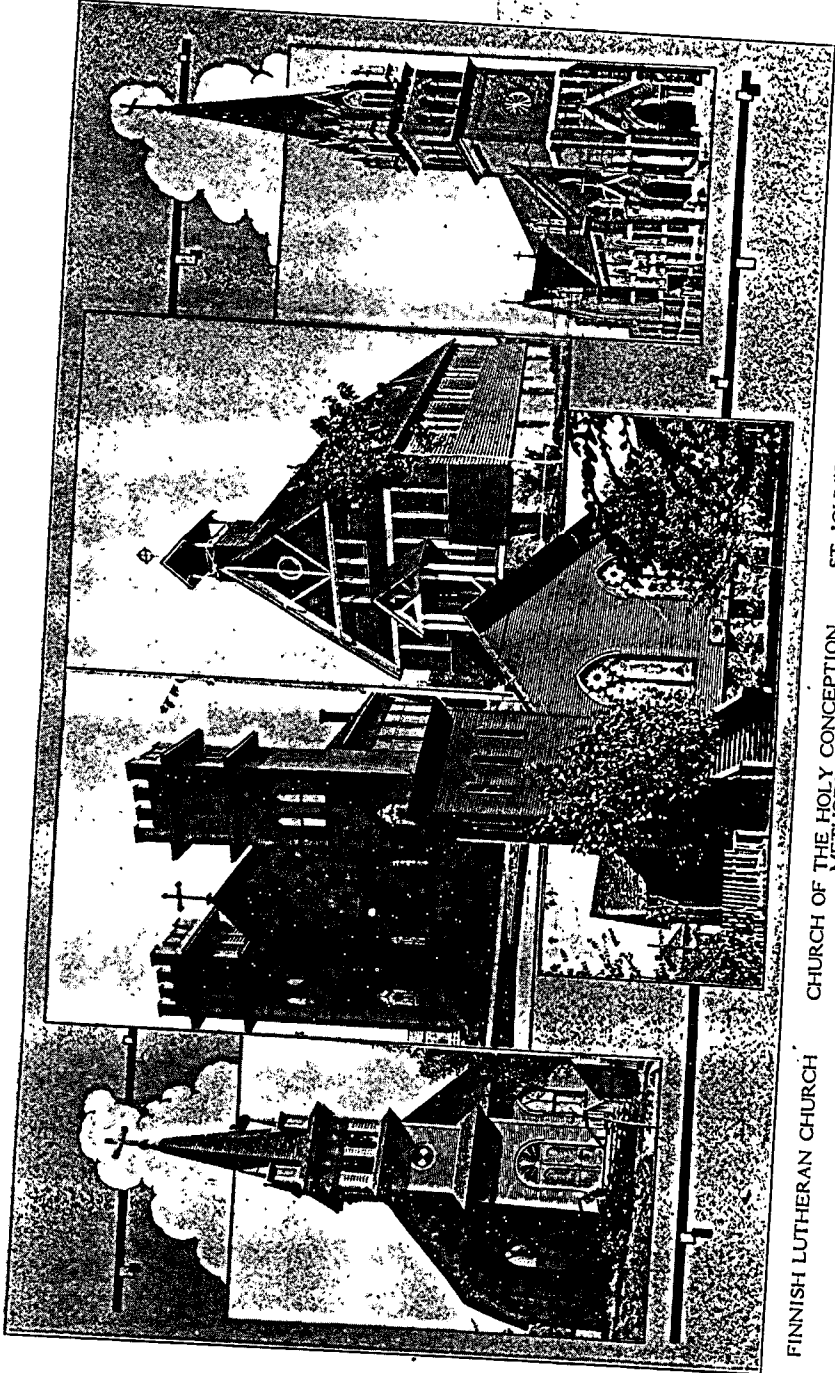
A tribute to the excellence of the public school system on the Mesaba Range was received September 2, 1920, when James A. Boyle, a former resident of Eveleth, and city attorney, member of the Minnesota state legislature, now a practicing attorney of Douglas, Arizona, told the Eveleth Rotary club that teachers who had held positions in the Range schools were accorded positions in the schools of Arizona and other adjoining states with great readiness, the fact of their having had experience in our schools serving as a special recommendation.

Of the buildings most prominent is a central group of schools comprising the Junior high school, built in 1910, the Senior high school, built in 1918, and the Industrial or Manual Training school, built in 1914. This group evokes enthusiastic comment by many visitors. To it will be added, at a cost of about \$700,000.00, in the near future, another modern building for use as a Grade and Girls' Vocational school on a site to the north of the Senior high school. The other schools are distributed throughout the city and include Fayal, Lincoln, Lincoln Annex, Spruce, and Adams.

An open air school has been maintained at Ely lake during the last two summers. This school is composed of one school building and two sleeping cottages and the work here is in the interests of children requiring special attention physically. A rural school in section No. 36 of Fayal township is now completed.



COUNTRY SCHOOL SOUTHWEST OF EVELETH



FINNISH LUTHERAN CHURCH

CHURCH OF THE HOLY CONCEPTION
METHODIST EPISCOPAL CHURCH

ST. JOHN'S EPISCOPAL

HOLY FAMILY CHURCH

1921

All schools are surrounded by beautiful and well kept grounds. Both interiors and exteriors are maintained in the finest of repair and kept in neat condition by an efficient janitorial force. The equipment is equal to any in the state and we may be pardoned for saying it excels the majority. The school levy for the fiscal year commencing August 1, 1920, is \$445,000.00.

The Eveleth baseball park and athletic field was constructed and is maintained jointly by the city and school district, which gives the students the advantage of a fine field for baseball, foot ball, and track work.

The band leader is paid jointly by the city and the school district. A student band has been organized.

CHURCHES

Eveleth numbers the following churches with established places of worship:

BAPTIST: Swedish, Adams avenue between Hayes and Garfield streets. Rev. Victor E. Anderson, 722 Harrison street.

CATHOLIC: Church of the Holy Family, corner Adams avenue and Pierce street. Rev. Anton Leskovic, pastor, 207 Adams avenue, phone 307.

Church of the Holy Conception, corner Jones street and Fayal avenue. Rev. Richard McKeogh, pastor.

St. Patrick's, corner Jackson street and Roosevelt avenue. Rev. D. V. Patt, pastor, phone 152.

EPISCOPAL: St. Johns, corner Pierce street and McKinley avenue. Rev. James Ward, pastor.

HEBREW: Congregation Agudath Achim, corner Jackson street and Adams avenue. M. Cohen, Kantor.

LUTHERAN: Finnish, Adams avenue, near Monroe. Rev. Merijarvi, pastor.

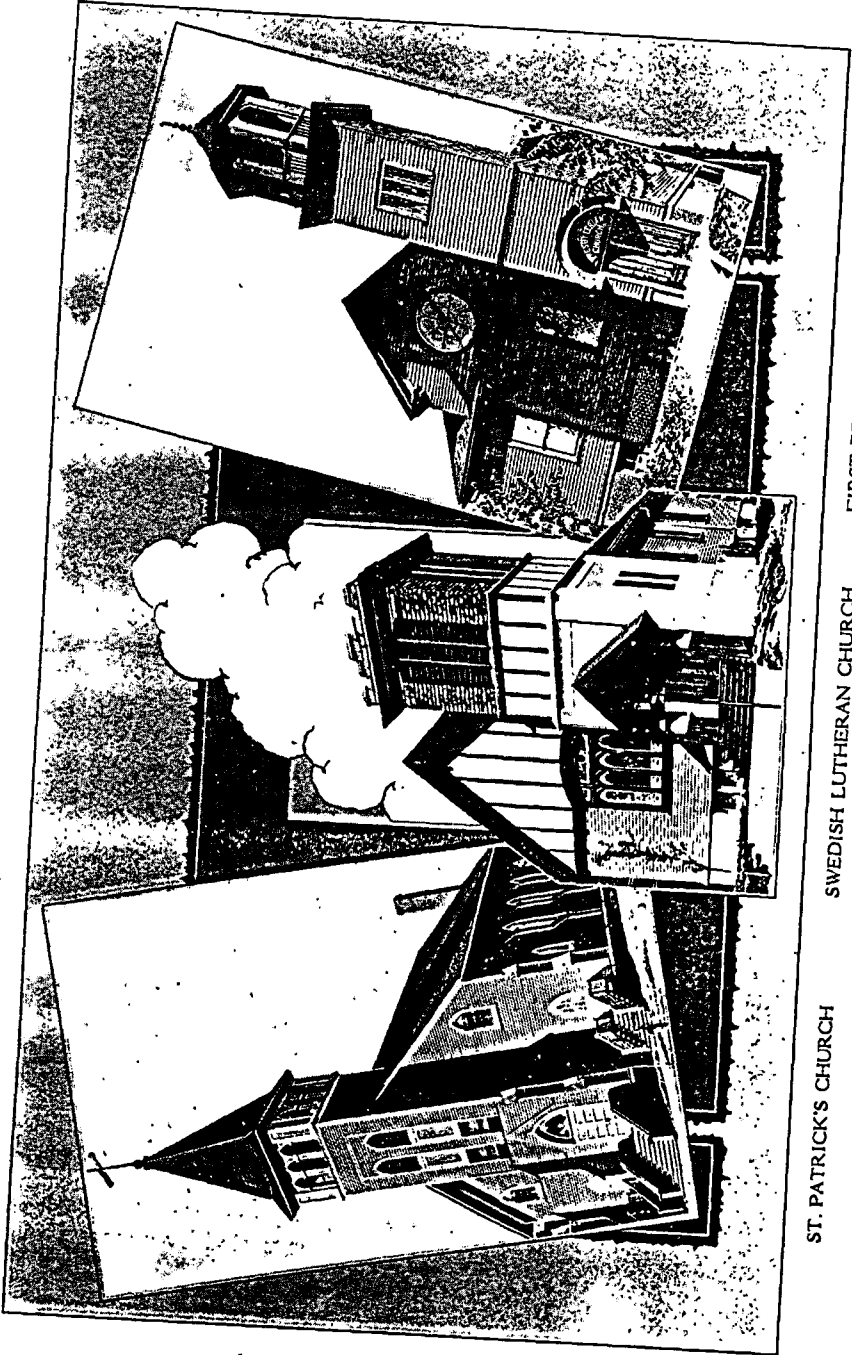
Swedish, corner Adams avenue and Pierce street. Rev. S. E. Johnson, pastor.

METHODIST EPISCOPAL: Adams avenue and Monroe street. Rev. I. J. Thorne, D. D., pastor. 202 Adams avenue, phone 209.

REBYTERIAN: McKinley avenue, near Monroe. Rev. L. C. Smith, pastor, phone 430.

THE EVELETH MUNICIPAL BAND

This band is composed of forty members, each one of whom is paid for every rehearsal and all engagements. In the summer a concert in the park and a dance at the Recreational hall are given each week, and in the winter this is varied by concerts in the Auditorium and for skating in the Recreational hall. The



ST. PATRICK'S CHURCH

SWEDISH LUTHERAN CHURCH

FIRST PRESBYTERIAN CHURCH

band is exceptionally well uniformed and has a fine library of music. A school band of thirty-five is maintained from which the new members for the Municipal band are recruited. Outside band men who are mechanics or miners are found suitable jobs at their trades. Any of extra proficiency are cordially invited to write to the bandmaster for detailed information. The band is under the direction of Ed. Chenette, who is nationally known as a writer, composer, bandmaster, and musical authority. He is also president of the Northern Minnesota Band league.

Among the outside engagements last year was a week at the State Fair, Minneapolis, where the Eveleth Municipal band was acclaimed as the best band at the Fair and in recognition of which it was delegated to head the parade for Governor Cox, Senator Harding, and to give concerts in the Plaza grandstand on the grounds.

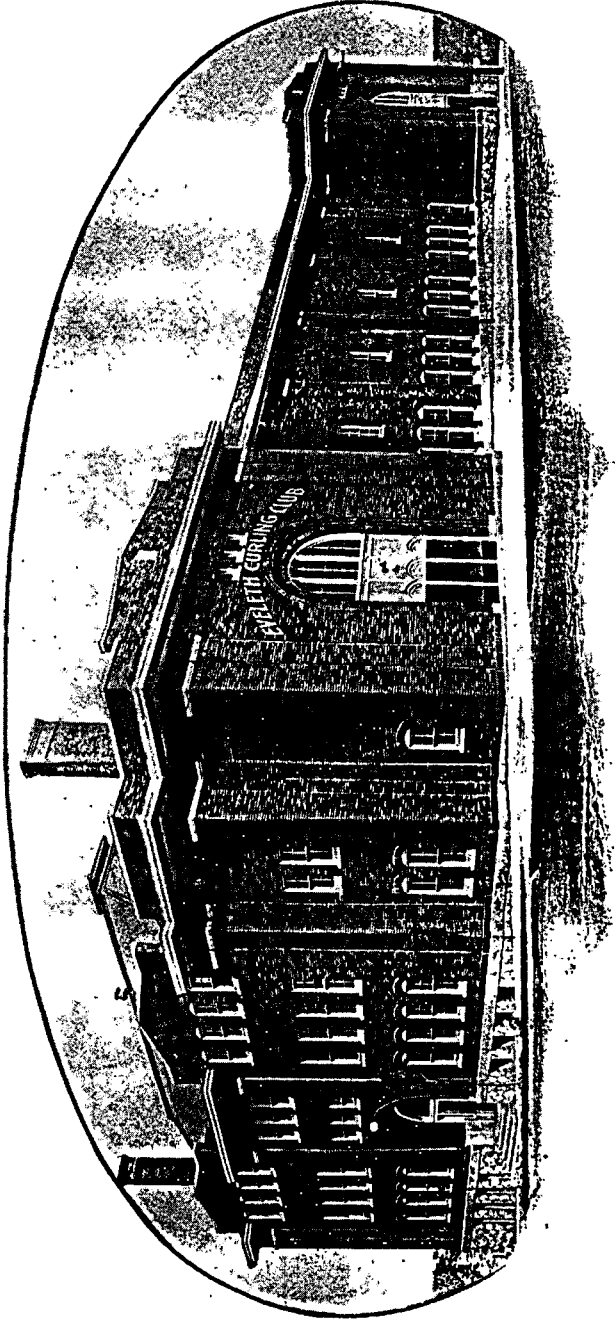
FRATERNAL AND BENEVOLENT SOCIETIES

Of these there is a full complement represented in Eveleth, among those most active being the Masonic, Elks, Moose, Odd Fellows, Owls, Workmen, Maccabees, Yeomen, Swedish Benevolent and Aid society, four Italian societies, a number of Austrian societies and a number of Finnish societies.

The Masonic has recently completed a new building at a cost of \$50,000.00. This is located on Adams avenue opposite the Recreational building.



MASONIC HALL



EVELETH RECREATIONAL BUILDING, HOME OF OUR CURLING CLUB, HOCKEY CLUB, PUBLIC SKATING RINK AND COMMERCIAL CLUB



LIST OF THE EVELETH DEAD IN THE WORLD WAR

| Name | Date of Death | Cause | Burial Place |
|-------------------|----------------|--------------------|-----------------|
| John Johnson | Nov. 16, 1918 | Influenza | Eveleth |
| Samuel Maxwell | Oct. 7, 1918 | Influenza | Virginia, Minn. |
| L. O. Magee | Sept. 12, 1918 | Killed in action | France |
| Henry Masucci | Oct. 13, 1918 | Killed in action | France |
| Carl Niemi | Apr. 10, 1919 | Aeroplane accident | France |
| Atry Peterson | Oct. 2, 1918 | Pneumonia | Virginia, Minn. |
| Willard Shea | Sept. 25, 1918 | Pneumonia | Eveleth |
| Peter Verdi | Nov. 1, 1918 | Killed in action | France |
| Vito Luiso | | Killed in action | France |
| Otto Pazari | | Killed in action | France |
| George Porthan | | Killed in action | France |
| Fred Ostrom | | Gassed, Influenza | Negaunee, Mich. |
| Clarence McDonald | | Killed in action | France |
| Peter Sterk | Nov. 7, 1918 | Killed in action | France |
| Harvey Morry | Aug. 1, 1918 | Killed in action | France |



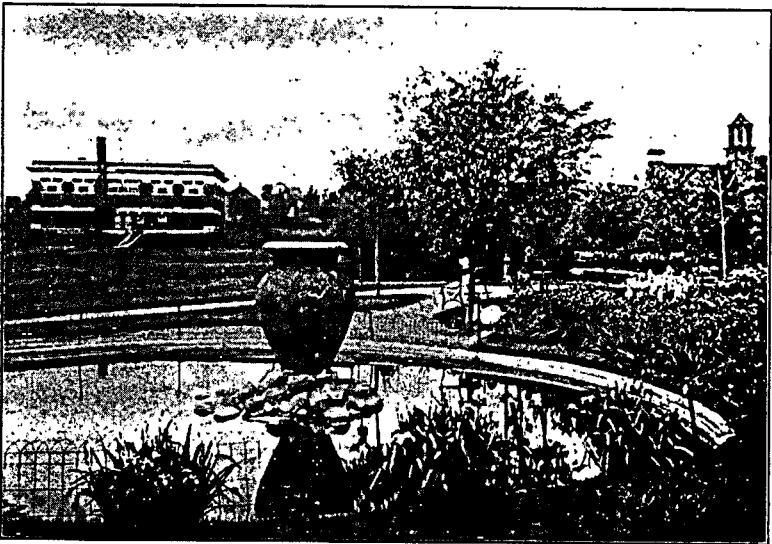
CLUBS

Other active organizations are the Eveleth Commercial club, Inc., the Eveleth Rotary club, and the Eveleth Women's club. These three organizations are important factors in the progress and well-being of the city, being concerned principally with public matters and civic betterment generally. The Commercial club has offices in the City Auditorium, but holds its meetings at the Recreational Building. The Rotary club meets at the Public Library, as does the Women's club.

The Eveleth Soldiers' club, organized as Eveleth Post No. 221 of the American Legion, is located at 225 Grant avenue. Quarters are well provided with necessary furniture, desk, pool tables, and chairs. This club takes an active interest in various forms of entertainment and social life.

PUBLIC PARKS

Eveleth takes great pride in its public parks. These are Central park, with an area of six acres, North Side park, with an area of six and one-half acres, and Lake park, consisting of about 200 acres of land at St. Mary's and Ely lakes. Central park is a fine piece of ground, naturally suited for a park. It was purchased in 1912 and immediately improved. Under the able supervision of Mr. J. A. Spurrier, park superintendent, its beauty has been enhanced from year to year and it is now admitted as one of the finest in the state. North Side park was



CENTRAL PARK

donated by the townsite owners when Highland addition was platted in 1910. This also is a very beautiful park and greatly appreciated by the inhabitants of the city. Both of these parks were planned by professional landscape artists on individual plans that could not be surpassed. Lake park is more of a rustic nature, the timber being preserved as far as possible and improvements made in order to open up the land for use. Among the attractions in the past has been a zoo containing deer and bear. The deer increased so rapidly in number that it became a problem to dispose of the surplus animals. Accordingly, they were given their freedom in October, 1920. The bears were also disposed of.

Holding band concerts in Central park has been a feature for a number of years. The band concerts of 1920 under the leadership of Mr. Edward Chenette were particularly successful.

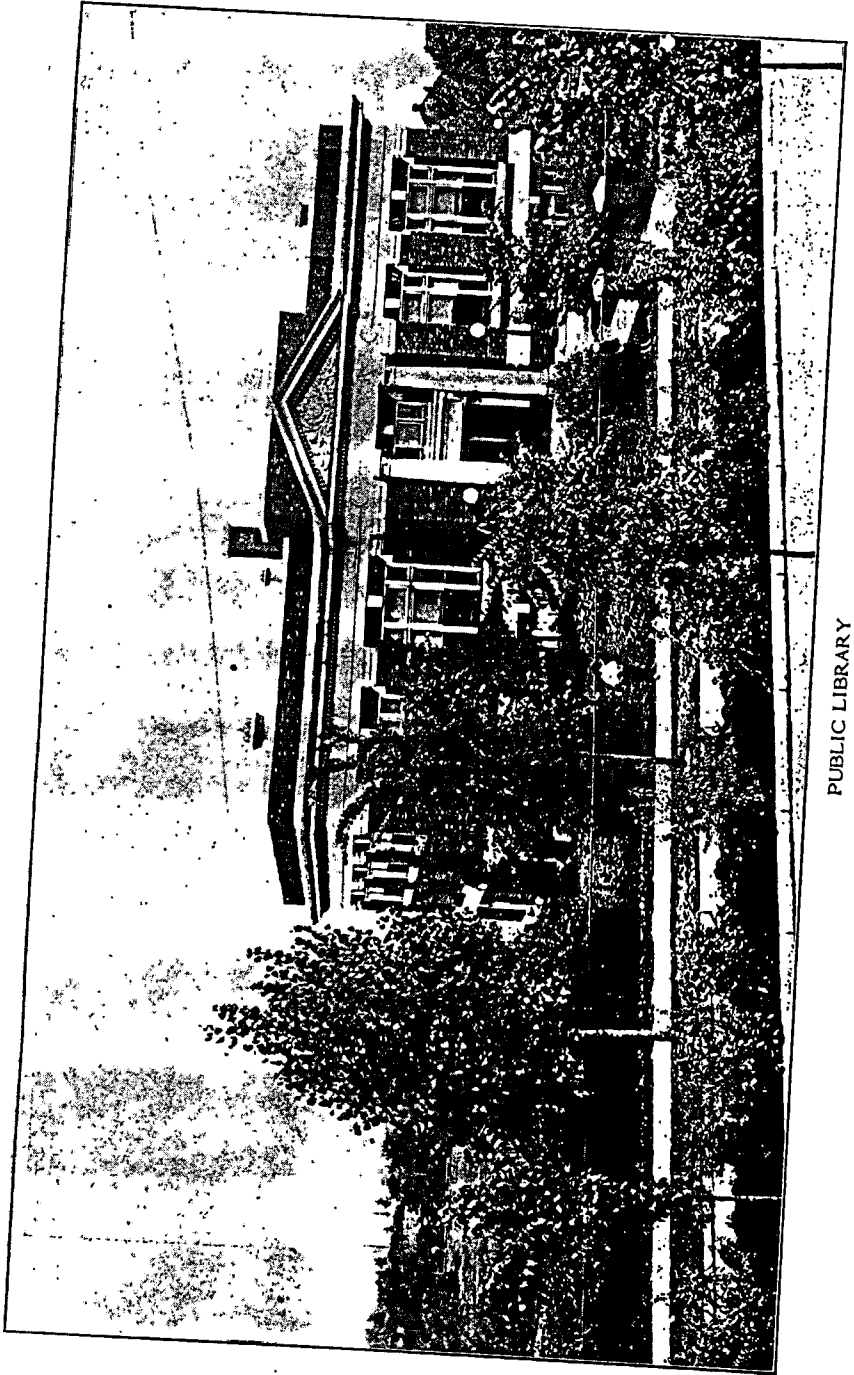
PUBLIC LIBRARY

The Public Library, acknowledged to be one of the hand-somest and best patronized in Northern Minnesota, was built in 1913-14 at a cost of \$30,000.00. Of this amount \$15,000.00 was donated by the late Mr. Carnegie. Plans for additional space have been prepared during the last year. The library was completed and opened in July, 1914. During its six years' existence the library has proved to be of great value to the community as an educational institution as well as for recreational purposes.

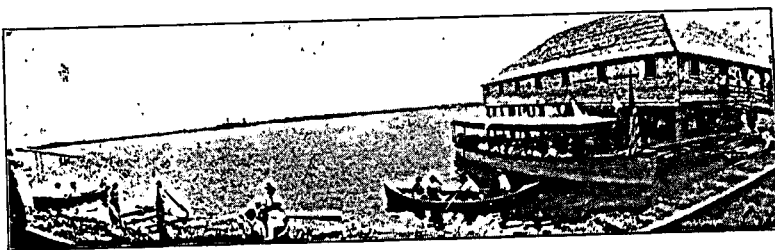
Responsibility for the library rests in the library board, composed of Dr. C. W. More, chairman, Solomon Sax, vice-chairman, George McCormick, secretary, Mrs. G. E. Peterson, Miss Hilma Berg, C. B. Hoel, H. J. Coleman, Peter Peterson, and W. H. Harvey. The board members are selected from among citizens



INTERIOR LIBRARY SCENE



PUBLIC LIBRARY



CRONIN'S BEACH, ELY LAKE

of Eveleth by the mayor, with the approval of the city council. The present staff consists of the following members: Miss Margaret Hickman, librarian, Miss Signa Niemi, first assistant, Miss Signe Venberg, assistant, and Miss Esther Peterson, assistant. Miss Alice Lyons is in charge of the children's department.

LAKES

Many who will see this booklet will have heard of the numerous lakes in Northeastern Minnesota and of the wonderful outdoor opportunities here presented. Eveleth is fortunate in having a number of fine lakes within one-half hour's ride from the city. Residents of Eveleth have enjoyed summer outings on these lakes for many years. Within the past few years summer cottages have been built on the shores of these beautiful bodies of water and a rapid development along this line is predicted. Ely lake, which is two miles from the city, is becoming a very popular resort. It has a number of very fine bathing beaches. Here are located a number of private cottages, while the public has ample opportunities for bathing at the Trenholm



BATHING BEACH AT ELY LAKE

pavilion and elsewhere along the lake shore. Ely lake is known officially by the U. S. Government as Cedar Island lake. A group of small islands on which cedar was native, stud the waters and add to the charm of the place. Fishing also has its rewards in these waters, bass being plentiful. An arrangement is now being made to add bass in increasingly large quantities from year to year. Other lakes containing bass are Long lake and Horseshoe lake, situated about five miles south of the city.

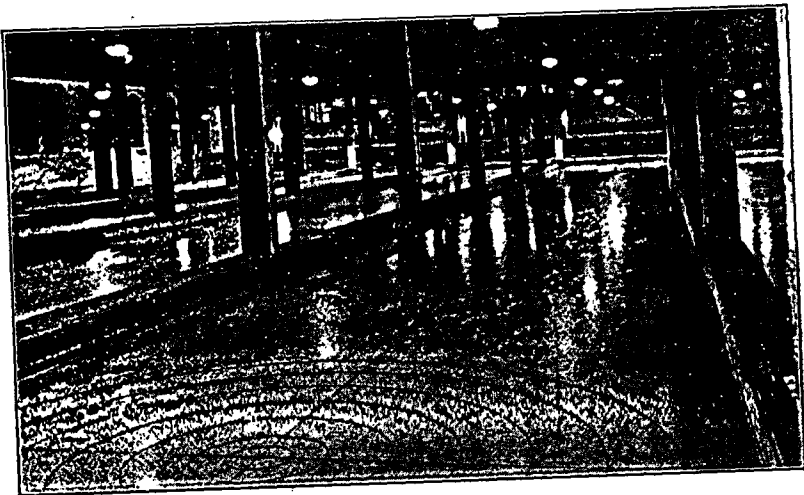
One of the most interesting lakes in this vicinity is Half-Moon lake, located about six miles south of Eveleth, reached by travel on the Miller Trunk road. On the north shore of this lake is the beautiful home of Mr. O. B. Warren, formerly of Hibbing, but now residing at Minneapolis. On the south shores of the same lake Dr. C. W. More of Eveleth has an attractive summer home.

In addition to the private grounds on these lakes there are many camping places where tourists would be welcome.

The pursuit of fish and game calls hundreds of Eveleth citizens into the countryside. Of the small game, rabbits and partridges are plentiful within a few miles of the city, and for deer hunting Eveleth is a good central point at which to organize for trips farther into the country. The growing farm settlements make it desirable to seek the deer tribe in more remote localities. Arms and ammunition can be obtained at five well stocked hardware stores in the city. Hunting licenses are issued at the city clerk's office in the City Hall. No hunting is allowed in Fayal township under orders from the State Game & Fish commission, designating that town as a game refuge for the purpose of breeding and increasing.



BLACK BASS CAUGHT IN LONG LAKE BY A. W. LEWIS



INTERIOR OF CURLING RINK

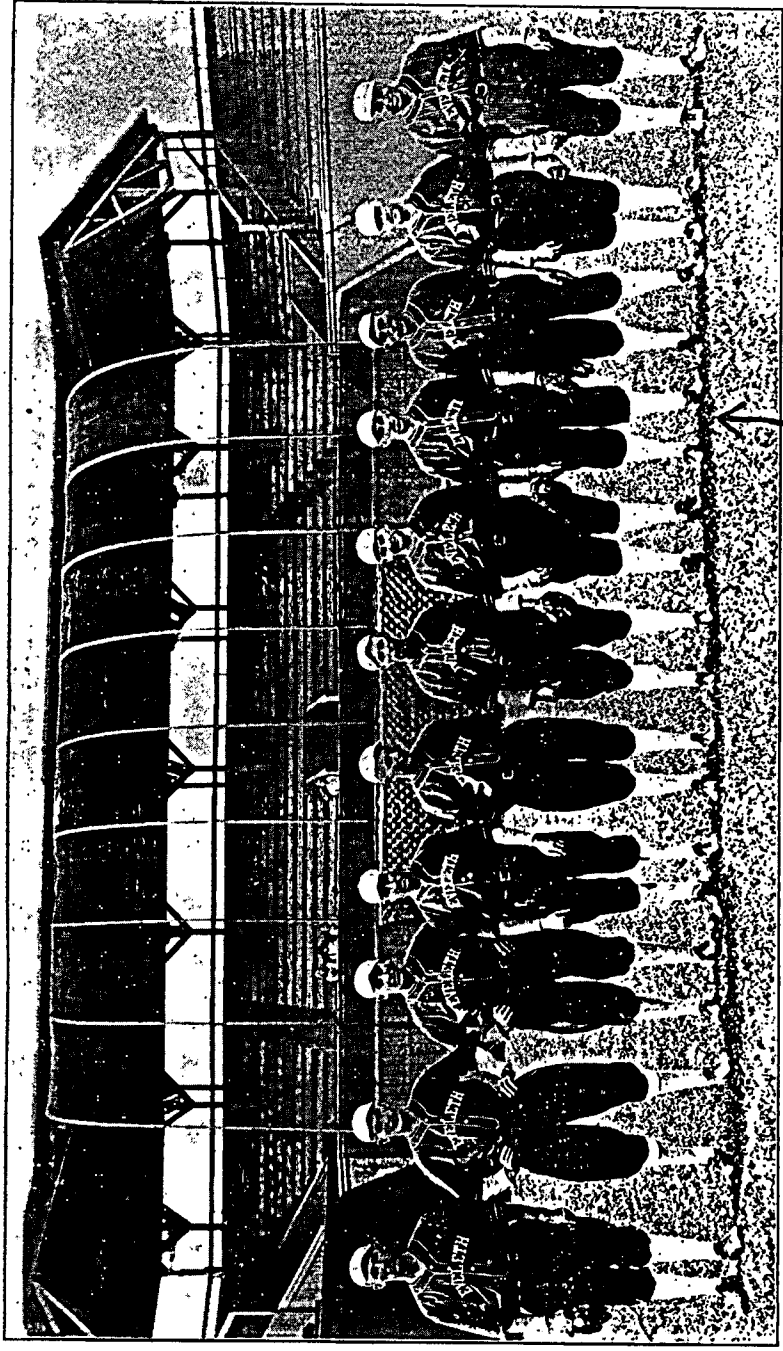
RECREATIONAL AND PLAY GROUND ACTIVITIES IN EVELETH

The earliest form of activity of this nature consisted of municipal outside skating rinks, of which there were three or four as long ago as 1912. These rinks were from one-half to an acre in extent and were very popular whenever weather permitted. They were constructed by the employes of the city street department and maintained by the department.

In 1915 there was a general movement to bring about a more comprehensive plan of recreation. An expert of the American Playground association, Mr. L. H. Weir, was secured to make a survey of the city. A very informing and suggestive report was made by Mr. Weir which has served as a guide or mentor in the work now being pursued.

The school activities can be summarized under four heads: (1) Gymnasium Classes, (2) Natatoriums, of which there are two, (3) Athletic Games, (4) Playgrounds. All activities are under the general supervision of Mr. A. W. Lewis, director of recreation. The gymnasium classes are formed from all grades from the fifth grade up, including the high school pupils and the students of the Junior college. There are regular classes in swimming. There is a lady teacher of swimming for the girls as well as a lady teacher of gymnastics. Boys and girls have separate swimming pools. Athletic games comprise baseball, basket ball, hockey, and foot ball. These are directly in charge of Mr. Lewis and are not confined to boys now in the schools, but also include alumni. School playgrounds are equipped with apparatus and

WHO ARE THESE BOYS??



BASEBALL TEAM OF EVELETH

1921 Muench

are supervised in every case. Seven supervisors are regular employes. Two of these are detailed to cover the downtown city playgrounds which otherwise are maintained by the city. The swimming pools at the school are open to the public Monday, Wednesday, and Friday nights. All apparatus and facilities are kept in first class condition continually by the school janitorial forces.

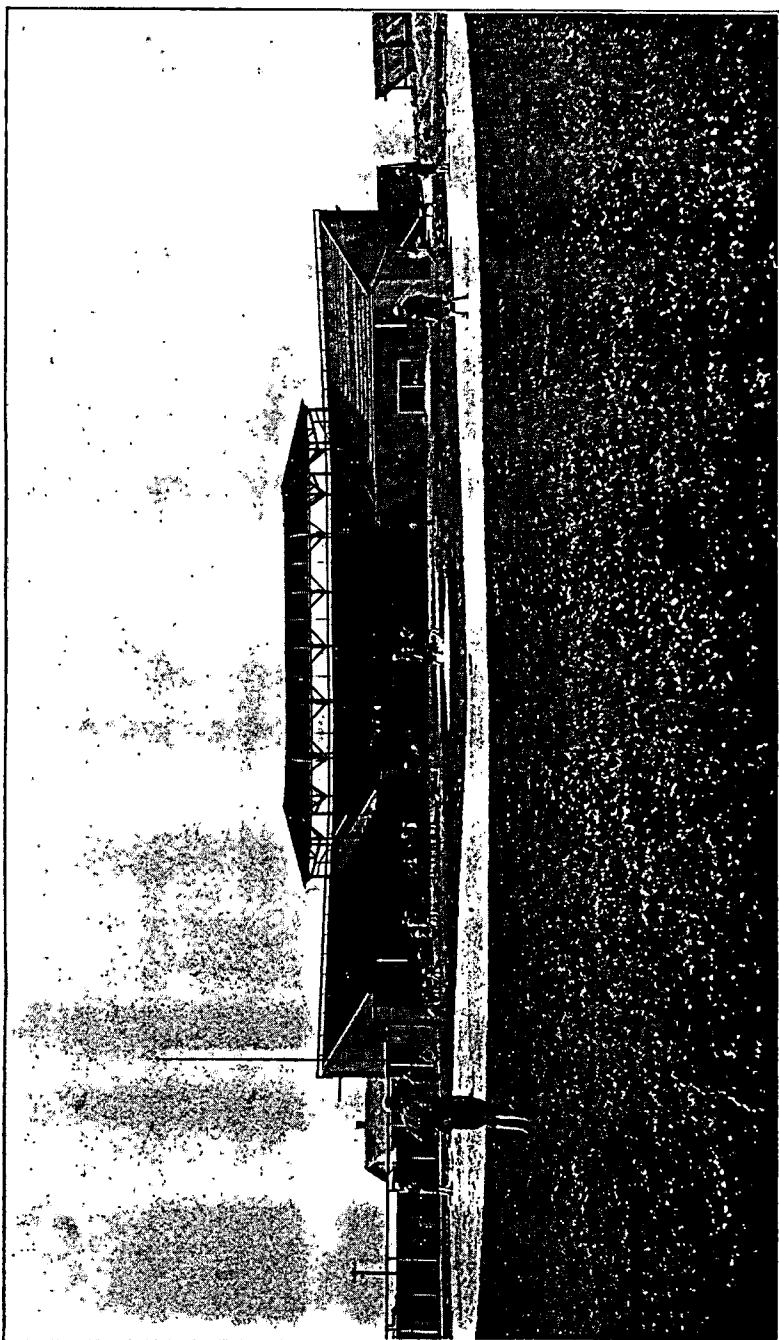
The city activities are centered for the most part in the Recreational building, a large, new, brick structure erected two years ago at a cost of \$125,000.00. This building contains two main floors, the first or ground floor being devoted to curling, an ice sport engaged in by teams known as rinks in the winter, while the second floor is used as an indoor skating rink in the winter and as a dancing floor and for basket ball, etc., at other times of the year. The city employs a director, this position at present being held by Mr. Robert Dunbar, who is known as the curling champion of the world. A toboggan slide was in use last winter for the Eveleth Home-Coming carnival, one block north of the Recreational building. The city maintains two downtown playgrounds, one near the Spruce mine and the other at the North Side park, which are especially for small children and are in use constantly during the summer months.

SPORTS

Sports are given a prominent place in all Eveleth activities. Baseball, curling, and hockey are well organized and attract the greatest attention. Ski running and skating are also very popular.

An organization that will long be remembered in Eveleth is that of the baseball team for the season of 1920. Although the Eveleth boys, who went under the name of the Eveleth Reds, did not win the championship of the Mesaba Range Baseball league, with which they were affiliated and with Virginia, Chisholm and Hibbing making up the league, they won more games than any other team in the league and proved beyond a question of a doubt to clean sport-loving people that they were by far superior as an organization to any other team in the Range league.

Out of the forty games played during the season, the "Reds" won twenty-four and lost sixteen games, including the two won and three lost in the past-season championship series with Hibbing. This record in comparison with twenty-one games won and eighteen lost by Hibbing, the officially named Range champions, including the three games won and two lost in the championship series.



EVELETH BASEBALL PARK

During the winter of 1919-20, Eveleth was represented by one of the strongest hockey teams in the United States and competed favorably with those of Canada, in spite of the fact that it was the first year hockey was played here and that hockey is the national game of the Dominion. The local team had its origin in the Winter Carnival in honor of returned service men from the great war. Out of twenty-four games played, the Eveleth septet was victorious in all but four contests and our boys went up against such strong aggregations as Duluth, St. Paul, Mohawk, and Calumet, Michigan, Hibbing, Virginia, Rainy River, and Winnipeg.

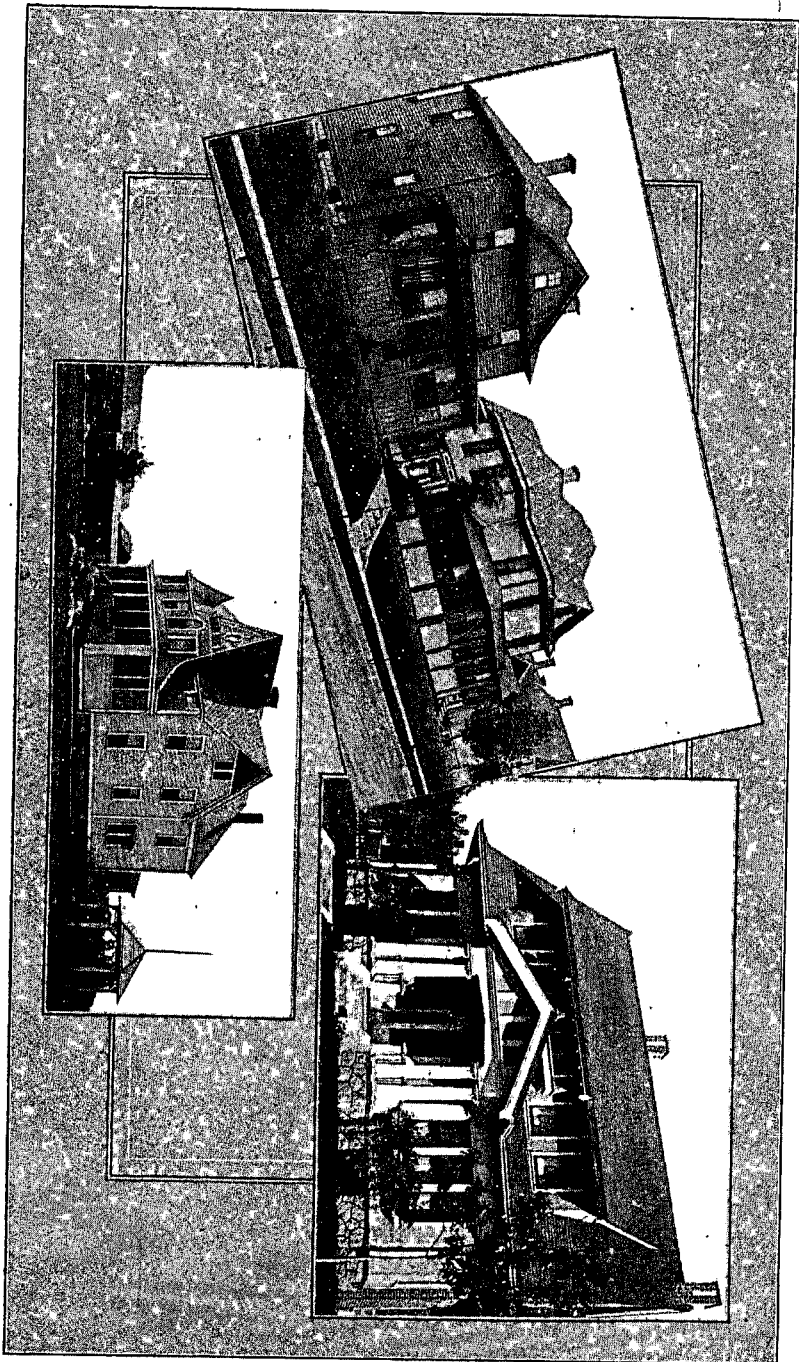
Eveleth is a great sport town and rivalry on the Mesaba Range is most keen. Eveleth in the past few years has more than held its own. During the winter months the sport for which the people of Eveleth are most keenly alive is hockey, and the reason for that is readily seen because the present Eveleth hockey team has attracted national recognition. In 1920 and 1921 the Eveleth hockey team won the championship in the United States Hockey league, Group III, and are matched to play off Cleveland, Ohio, for the championship of the United States. Eveleth has played the same teams that Cleveland has this year and has defeated the same teams that Cleveland has and over double the score that Cleveland was able to ring up. This season Eveleth has played thirty games and of these has only lost one game, but defeated this team when they lost to three out of four games. It is hardly a question but that Eveleth this year will be declared the hockey champions of the United States.

By winning the championship in Group III of the United States Hockey association, Eveleth became the winner of the famous \$2,000.00 McNaughton cup.

The personnel of the hockey team is as follows: Percy Nicklin, captain, Ivan (ching) Johnson, Adrian Johnson, Percy Galbraith, Patrick Clark, Frank Cadham, James Seaborn, Oscar Gehrke, and Bernard McTeigue. Leonard Peterson is manager and John Law is the trainer.

In basket ball and foot ball Eveleth has always had strong teams and especially so in baseball. In the playing season of 1920 Eveleth had the strongest baseball aggregation in Northern Minnesota and had one of the strongest baseball aggregations in the state and in 1921 bids fair to have a far better team. Eveleth can feel proud of her athletic achievements.

The affairs of various athletic teams are managed by the Eveleth Athletic association, an organization composed of thirty-one citizens incorporated for the purpose of handling all athletic affairs for the benefit of the citizens and not for profit. Victor E. Essling, mayor of Eveleth, is president of this association. It is not only the purpose of the association to handle



A GROUP OF HOMES

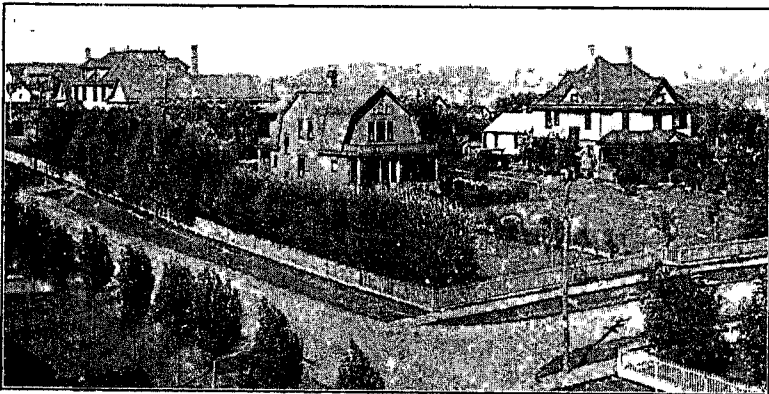


PUMPMEN'S HOMES AT ST. MARY'S LAKE

have just been completed recently is Mr. Gus. Hendrickson's modern \$12,000.00 home, well equipped with all conveniences which the modern age can suggest.

The Essling Apartment building is a very showy, modern \$125,000.00, substantial, three-story and basement, concrete and brick apartment building. The thirty-two apartments will be furnished with wall and closet beds, dining alcoves, tables, and seats, French buffet, work tables, kitchen cabinets, electric ranges, and tile floor bathrooms. A portion of the basement fronting on Adams street will be equipped as an up-to-date cafeteria for the convenience of those residing in the building and for the general public.

Many other cozy homes are to be found throughout the city.



MINE SUPERINTENDENTS' HOMES

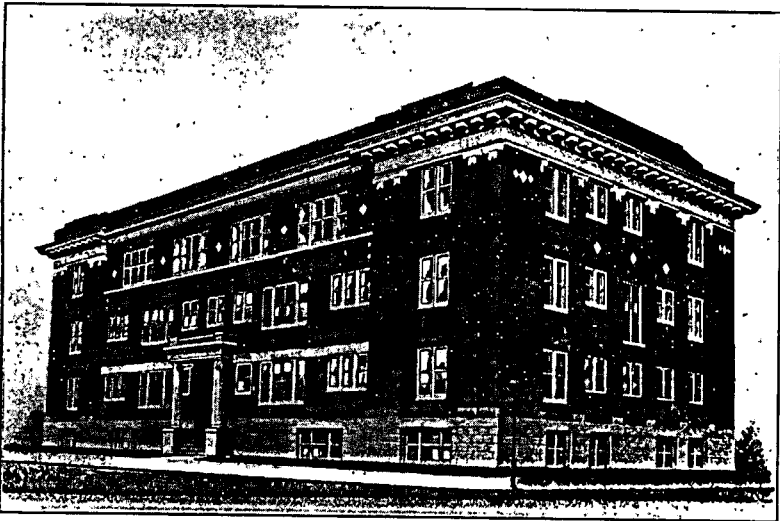
athletics, but it has also accomplished a great deal in the line of recreation. They have caused the establishment of outdoor rinks and the promotion of playgrounds so there are at present three playgrounds maintained by the schools in the city. The schools are splendidly equipped with gymnasiums, swimming pools, and shower baths. The schools employ a recreational director. The city is contemplating building an outdoor wading and swimming pool in connection with one of the parks.

The Eveleth Curling club dates back to 1909 and is a strong organization with 150 members enrolled under the direction of the following officers: President, George A. Whitman; first vice-president, G. H. Murray; second vice-president, D. B. Austin; treasurer, C. B. Hoel; secretary, W. J. Davey; trustees, F. R. Campbell, T. A. Pratt, and Dr. J. G. Saam.

The game is an absorbing one throughout the winter. New members are welcome. Quarters at the Recreational building are the equal of any in the country. Six sheets of ice are kept in the best of condition by experts.

HOMES

The homes of Eveleth, many of which have been built in late years, are most attractive and beautiful. Among those which



THE ESSLING APARTMENT BUILDING



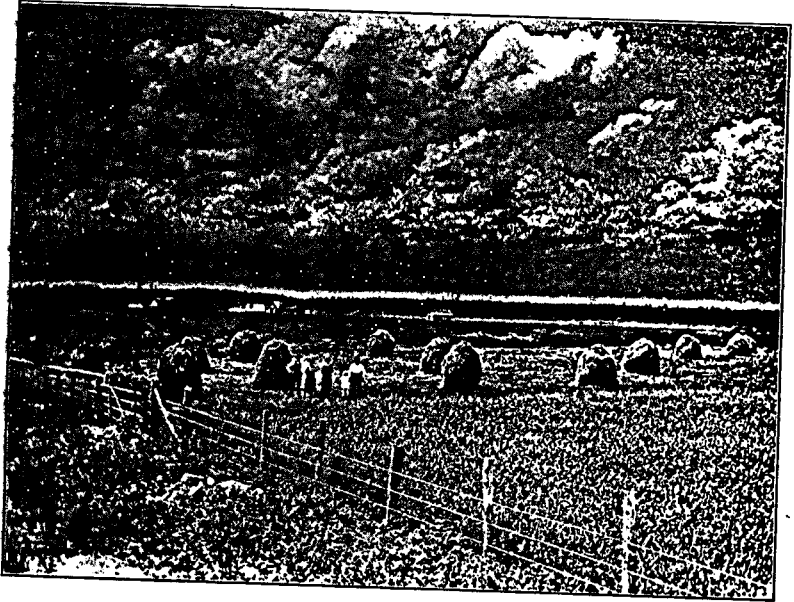
AN EMPLOYEE'S HOME RENTED FROM MINING COMPANY

REAL ESTATE

Real estate in Eveleth is always good. The town has never experienced a real estate boom, but has always shown a steady growth with a corresponding increase in realty values. Ground values on Grant avenue, the main business street, range from \$2,500.00 per lot to \$5,000.00 for inside lots and up to \$10,000.00 for corner lots. As practically every lot is now covered with a building, which has been the case for many years, the value of the building would be in addition to the foregoing figures, which are stated on the basis of the ground value only. Residence lots range from \$350.00 up to \$1,000.00, according to location. Residence property commands a higher figure in Eveleth than in most other cities of the state, this being due to the compact area of the town and also to the steady, uninterrupted progress of the mining industry.



J. R. JACOBSON'S FARM HOME



HAYFIELD ON CHARLES PENTTILA'S FARM

FARMS AND FARMING

Classified broadly, the country around Eveleth beyond the iron ore belt is suitable for dairying, stock raising, and truck gardening. Much good land is available at from \$15.00 to \$25.00 per acre, according to location. Close-in wild land has been sold at \$40.00 per acre. Improved farms are worth from \$50.00 to \$100.00 per acre.

New roads tapping the farming country are being built at an astonishing rate. This is not a backwoods country. Roads are numerous and are improving wonderfully. Extensive fields and substantial buildings are common.

The leading crops on the farms about Eveleth are hay and potatoes, but all grains may be raised and the yields are above the average in Minnesota.

VEGETABLES

Conditions are ideal for the production of all varieties of vegetables. The soil is clay or a sandy loam with clay subsoil, works up well and can be gotten into such a high state of fertility by the growing of clover and manuring that ideal seed bed conditions can be secured. Weather conditions ensure a marvelous growth of garden products. There is scarcely any limit to the

variety which can be grown. Potatoes, cabbage, onions, beets, parsnips, radishes, lettuce, cauliflower, tomatoes, rhubarb, celery, berries, sweet corn, carrots, beans, and peas will all be found perfectly dependable. Celery can also be raised to good advantage. St. Louis county potatoes, cauliflower, head lettuce, beets, carrots, parsnips, radishes, and rhubarb took first prizes at the Minnesota State Fair in 1920.

Every year Eveleth holds a Farmers' Day at which the products of the surrounding farms are displayed and prizes awarded. This exhibit always calls forth enthusiastic comments on the agricultural possibilities of the district and it opens the eyes of many who were under the impression that our resources were limited to iron ore. On these occasions the city is host to the farmers at a fine dinner arranged by the Commercial club.

POTATOES

The large potato crop of this county is destined to make St. Louis county one of the best known potato producing sections of the world. This county has already taken a number of the first prizes at the big shows throughout the country in the past few years, receiving eighteen against fourteen premiums by all the other counties of the state combined at the Minnesota State Fair in 1919, and in 1920 first prize on Cobblers, Green Mountains, Rurals, and Russets.

Quality considered, it is safe to say that nowhere in a northern latitude are better crops of these products raised. These conditions being true of St. Louis county, therefore also prove true of the Eveleth district.

Types of potatoes most adaptable to the soil about Eveleth are Rural New Yorkers (Carmen No. 3), Green Mountain (Carmen No. 1), Burbanks, Early Ohios, and Bliss Triumphs. The development of local potato exchanges now in contemplation will extend the shipping of potatoes in the next few years.

CLOVER AND GRASSES

To one familiar with the growth of clover in this section its thrivance will no doubt be well understood. Ground turned over once with a slight dressing of manure, will produce clover much quicker and stronger. Two crops of clover hay may be gathered from this district and though customary, often farmers allow the livestock to graze on the fields after the second growth has made a good start. Still again where the field is to be continued for another year, the seed is allowed to mature and thus promote natural reseeding.

From three to four tons of clover and timothy hay is a normal yield per acre from two crops—in round figures \$100.00 worth of forage from an acre.

HOW A FARM IS STARTED

The immediate pages have no doubt lived your interest in farming, so let us open the door to the necessary conveniences of such a livelihood, the building of "home-sweet-home."

As most generally is the case there is the homeseeker bent on erecting his abode against all odds while the less determined weakens under the strain of difficulties, and retires to some distant pastures. Those who planted gardens and built home sites about Eveleth are today in the greater share very comfortably situated. They now realize as also do many in other states "that something was doing." Publicity has also aided to spread this propaganda.

During the period of five years many almost single handed have developed farms worth more than \$5,000.00 on a piece of land originally valued at \$800.00 or \$1,000.00.

Farming can easily be made a secondary and yet a most profitable industry about Eveleth. A miner working each day can spend his spare time developing a small tract of land, selling its by-products at a very husky profit and eventually earn for himself a much valued farm and home.

It is indeed a source of great satisfaction to those who early predicted an agricultural development that many Evelethians return from extensive auto trips central west only to realize more fully the wonderful opportunities (the choice condition of our soil being a great factor), as contracted with large areas elsewhere, where farming is practically the only source of income.

CROP ROTATION

A three-crop rotation is generally practiced, first year oats or other grain, second year timothy and clover (this may be kept for two seasons), and third year potatoes. It is also customary to start with potatoes on new land, then take up the rotation stated.

WHAT EVELETH WANTS

Eveleth is fast becoming the center of a rapidly growing farming center and a potato and vegetable warehouse would be a profitable undertaking; it would be a boon to the farmers and an incentive to put in a larger acreage as a more staple market would be obtainable the year around.

Eveleth is also in need of a farmers' co-operative creamery. At present there are some 600 cows which would furnish butter fats and this number would surely increase if the creamery was put in operation.

FACTORIES

Large manufacturing concerns could well look to Eveleth as a branch point to establish factories to manufacture overalls,

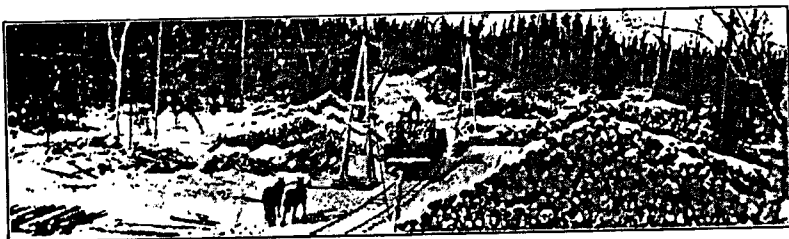
shirts, garments, or the like. They would find an industrious class of people and from seventy to eighty women who could carry on their work at once. A factory or a branch factory would receive abundant support in the city and conditions here are ideal for one.

LIVESTOCK

No system of farming in northern latitudes is complete without animal husbandry—the reason, Fertilizer. The farmers around Eveleth recognize that fact and are building up their dairy herds and also going in for sheep. Those producing large quantities of milk usually ship to the Range towns and also to Duluth, where it goes into the regular channels of consumption. Others supply cream and many make butter on the farm and sell to private customers. The sheep movement is gaining impetus, especially as sheep are valuable in clearing the ground of the small brush and natural growth. Once a piece of land is grazed heavily by sheep, the farmer is able to extract the stumps and clear away the debris because the smaller stuff is out of the way. While it is not advisable to turn sheep loose in heavy brush, they are effective in keeping down the second growth of poplar and in compacting the soil. Anyone who has cleared land will appreciate the value sheep render in this way. The farmers in this locality are going more and more into pure bred stock—for the larger cattle Holsteins and Guernseys have the preference. The breed of sheep seemingly most favored are Oxfords and Shropshires. Poultry has not been given the attention it will ultimately receive, but there are many pure bred poultry flocks in this vicinity.

ADVANTAGES OF A TIMBERED COUNTRY

In settling in a timber country a farmer should remember several very important advantages in his favor. In the first place, a timbered country is nearly always a particularly good agricultural country when once developed, the growth of timber alone indicating that the soil and climate conditions are favorable for vegetable growth. In the next place, the fuel



SAARI BROS. LOGGING

question is solved for him; likewise the timber and fence post problem. The man who settles in a prairie section forgets to consider the initial cost of these improvements, which the timber farmer can have for the mere procuring. Timber countries are not subject to drought or extremes of climate. An additional advantage is given to the farmer in this section in the shape of numerous attractive lakes, where the fishing is good in summer and the hunting is excellent in the fall and spring.

In winter there is uniformly cold weather, there are not the rapid fluctuations in temperature found in many days of sunshine and clear, dry, bracing atmosphere, the severe weather is not noticed nearly so much as in other sections where the moisture-laden atmosphere on a day when the temperature is at zero becomes most unbearable.

In summer the days are quite warm, but rarely very hot, and the nights are invariably cool. It is pronounced by physicians as one of the healthiest climates, and many home-seekers locate here in quest of good health. The many lakes in Northern Minnesota are rapidly gaining a national reputation as summer health resorts on account of the bracing air, pure water, and general healthful surroundings. Climatic diseases such as malaria are unknown.

WATER

The water in the vicinity of Eveleth is pure and soft. Good drinking water in open wells can usually be obtained at a depth from fifteen to thirty feet. In some places, wells are drilled to a depth of 100 feet to insure a permanent flow of water. There is no difficulty whatever in getting the very best and purest of well water. A well should be obtained before going onto the land, as it is a first necessity. Of alkali there is none. There is always abundant rainfall during the summer and fall months. Statistics show the average rainfall in various points of the state as being sufficient for all crop needs.

With two great industries rapidly progressing toward their zenith, the expansion of which will attract many others, a population of about 9,000 lives, rapidly increasing, led by men typical of the spirit that does things, that "delivers the goods," the days of experiment for Eveleth are past. They are replaced by certainty of the future, based on concrete results born of hard work, solid knocks, and brains, coupled with grim determination to win. As the space was limited in this humble book, we were unable to expose to the reader everything contained in the heart of our city, but should you be further interested, the secretary of the Commercial club of Eveleth eagerly awaits your inquiries.

MINNESOTA UTILITIES COMPANY

Eveleth

Chisholm

Kinney

Kelly Lake

Carson Lake

Stevenson

Nashwauk

Calumet

Marble

Taconite

Bovey

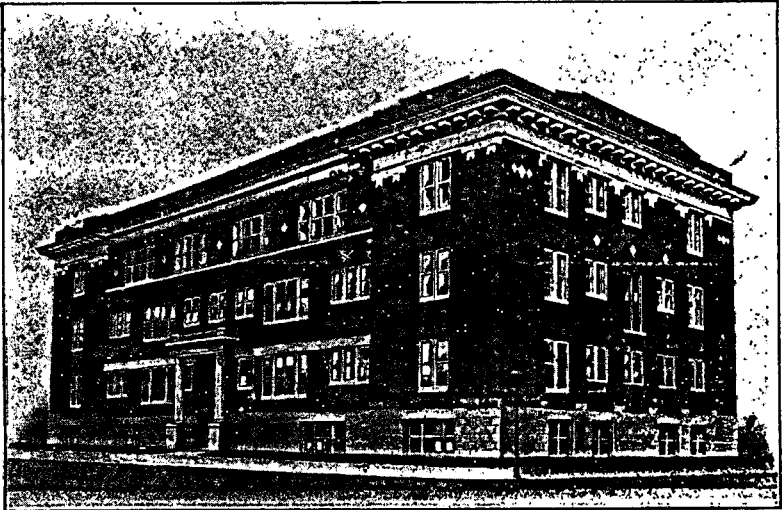
Coleraine

Grand Rapids

Cohasset

Deer River

LIGHT HEAT POWER



The Essling Apartment Building, Eveleth, Minn.

This very showy, modern \$125,000 substantial three-story and basement brick and concrete apartment building is nearing completion and all but ready for occupancy.

Each of the thirty-two apartments is furnished with wall and closet beds, dining alcoves, tables, and seats. French buffets, work tables, kitchen cabinets, ice boxes, and electric ranges, and tile floor bathrooms.

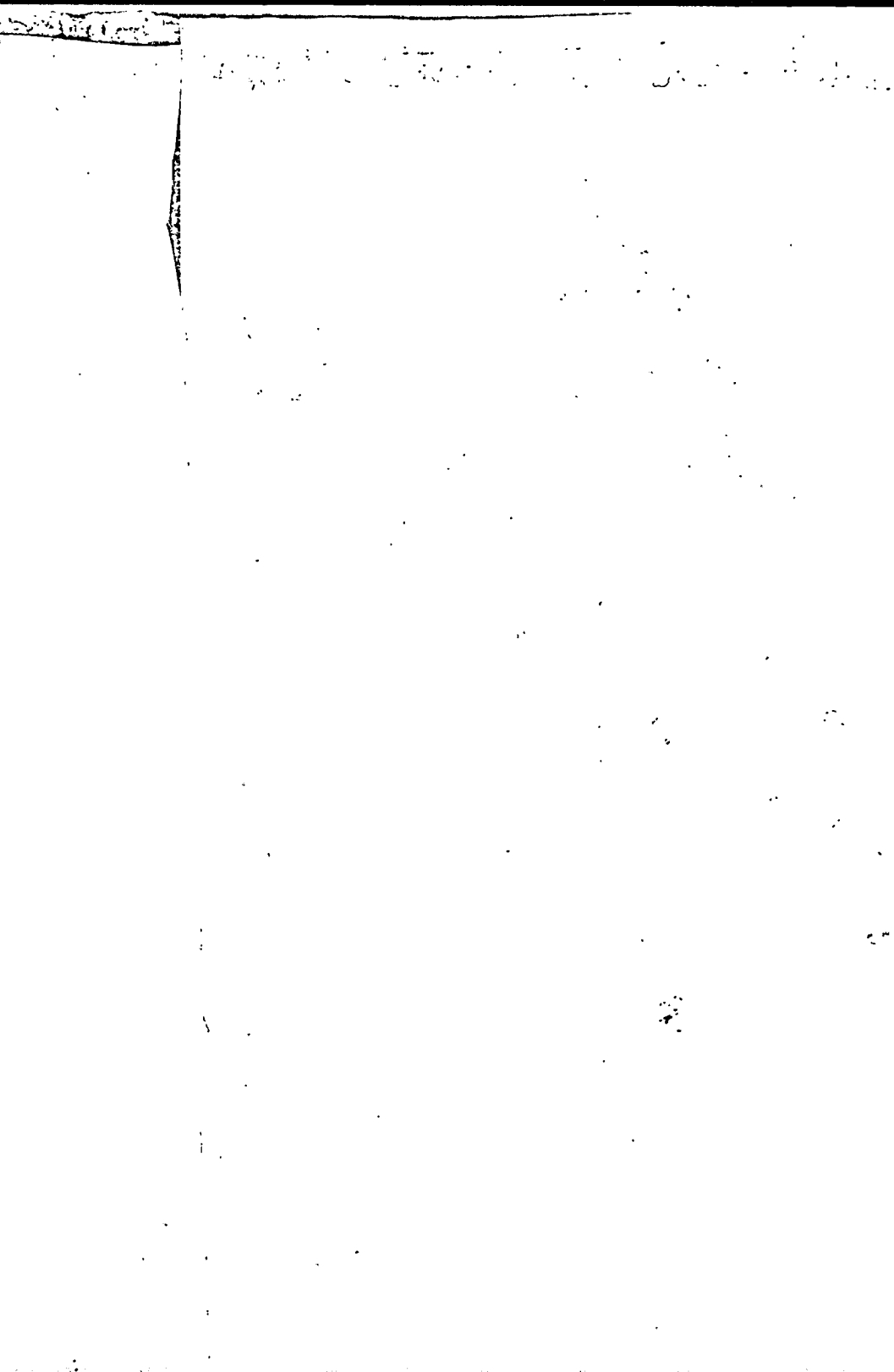
A portion of the basement, fronting on Adams Ave., will be equipped as an up-to-date cafeteria for the convenience of those residing in the building and for the general public.

The rest of the basement contains a laundry, equipped with electric washers and irons, mangles, stationery wash tubs, three steam dry rooms. Steam heat, light, and power will be furnished by the Minnesota Utilities company, so no furnace will be necessary.

**Anyone Desiring Worthy Investments Will Receive
Complete Information From**

VICTOR ESSLING

**President RANGE IMPROVEMENT CO.,
Eveleth, Minn.**



The Park Hotel

EVELETH, MINN.



CLEAN
COMFORTABLE
CONVENIENT

Commercial Men Given Every Consideration



THE PARK HOTEL

W. J. CAHILL

Eveleth Booster

ART KRAFT

A good drawing will speak louder in advertising your business than any kind of writeup. Send us your idea and we will send you a sketch.



239
Fergusson
Bldg.
Duluth, Minn.
Phone, Mel. 2159
H. SLOAN
A. E. SCHAR

SERVICE

HAS BEEN THE BACKBONE OF OUR BUSINESS FROM THE START

We believe in the old proverb: He will live long and proper, who serves best.

LET US CALL FOR YOUR LAUNDRY DAILY
Cleanliness Safety and
Absolute Satisfaction Guaranteed

White Cross Laundry

EVELETH, MINN.

FRED SMITH

EVELETH BOOSTER

**YOUR JOB - - - - -
EVERY MAN'S JOB**

is to make a good living and make a good living long. Make your work your capital, so that every day shows a profit. That profit should show on the pages of a Savings Account Book.

**The First National Bank
OF EVELETH**

**Range Rapid Transit Company
FITZGERALD BROTHERS**

**BUS AND LIVERY SERVICE
DAY AND NIGHT**

Telephone 450

Residence 591, Eveleth, Minn.

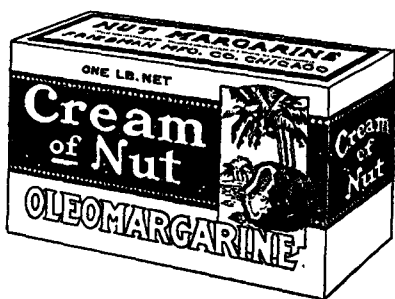
**PENTTILA-MATSON CO.
EVELETH BOOSTERS**

Once You Trade with Us, Always Our Customer
We are in business to serve those who want the best in
GROCERIES and MEATS

**PENTTILA-MATSON CO.
204 Grant Ave.**

DO IT FOR EVELETH

The Cream of NUT BUTTERS



MAKES BREAD TASTE GOOD

YOU'VE tasted the rich white meat of coconuts: you know the flavor of PURE, PASTEURIZED MILK from the best dairies. Learn how we have combined these delightful ingredients in

Cream of Nut

Friedman's *Oak Grove* Oleomargarine—of equally high quality, is recommended to those who prefer the animal product.

FRIEDMAN MANUFACTURING CO.

CHURNERS

CHICAGO, - ILL.

The Miners National Bank

THE BANK OF
SERVICE AND COURTESY

We Write All Kinds of
INSURANCE

The



Drug Stores

EVELETH, MINN. VIRGINIA, MINN.

Carry a Complete Stock of Drugs, Sundries, Toilet
Articles, Candies and Cigars.

The Two Finest Soda Fountains in the Northwest
Ladies Rest Room in Each Store.

Agency WHITMAN'S Candies

Range Hardware & Furniture Company

Complete Line of High Grade Hardware, Furniture,
and Building Materials

LINDSTROM & FRANKS

Eveleth Boosters

319 Grant Ave.

Phone 10

Do It for Eveleth

Eveleth Plumbing & Heating Company

415 Grant Ave.

PLUMBERS and FITTERS

Our Motto Will Be **SERVICE** and Right Prices
Let Us Quote You Prices on All New and Repair
Work

**A. L. JOHNSON - HERMAN BECKMAN -
J. A. JANNEY**

Eveleth Boosters

Eveleth Mercantile Co.

119 Adams Avenue. Phone 578

“Minimum Prices—Maximum Service”

IS OUR MOTTO

Backed by highest quality goods.

City Meat & Grocery Co.

117 Grant Ave.—Phone 90

THE HOME OF MEATS AND GROCERIES
FRUITS AND VEGETABLES IN SEASON

Give us a trial and be convinced

ACCESSORIES
STORAGE
TIRE EXPERTS

AUTOMOBILE
AND TRUCK
DEALERS

THE MOTOR INN

Telephone 450

DODGE - LEXINGTON - WHITE TRUCKS

BOYLE & MATHER

EVELETH BOOSTERS

EVELETH - VIRGINIA - GILBERT

DO IT FOR EVELETH

IT'S WASHING MACHINE TIME—

GET YOUR GAINADAY—At the New Price

Copper.....\$160.00

Galvanized..... 149.00

Sold on Easy Terms

ELECTRIC SERVICE CO.

Telephone 71

E. J. BANKS, Propr.

314 Grant Ave.

ALL VISITING MOOSE ARE WELCOME
AT ALL TIMES

EVELETH LODGE 930 MOOSE CLUB ROOMS

504 Grant Ave., Eveleth, Minn.

JOHN C. BROWN, Sec.

E. J. COLE, Dictator

EVELETH BOOSTERS

City Drug Store

THE REXALL STORE

Brunswick and Victor

Victor Records, Eastman

Phonographs

Kodaks

Magazines, Johnston's Candies

FULL LINE OF CIGARS

Our Motto: The finest in Drug Store merchandise;
the best in Drug Store service.

CASEY & MATHER

EVELETH BOOSTERS

COMPLIMENTS OF

I. G. BROWNELL, Druggist
DRUGS AND STATIONERY

318 Grant Ave.

Telephone 72

EVELETH BOOSTER

VISIT THE

EVELETH CANDY KITCHEN

The Home of Highest Grade Candy and Fruit

Soda Fountain and Lunch Service

Try some of our Fresh Chocolate Covered Brazils

EVELETH CANDY KITCHEN

320 Grant Avenue

DO IT FOR EVELETH

**Helps-Shea Hardware
Company**

HARDWARE
FURNITURE
CUTLERY
FUNERAL DIRECTORS

A Full Line of Sporting Goods

Phone 58

HELPS-SHEA COMPANY

EVELETH BOOSTERS

Damberg Brothers

EVELETH BOOSTERS

—Dealers in—

High Grade Clothing and Groceries

There are four necessities of life. Two of them, air and water, are free. The other, food and clothing, we must pay for. Why not buy them at the store where quality and right prices reign supreme at all times?

DAMBERG BROTHERS

GROCERS

DRY GOODS MERCHANTS

Eveleth at 321-322 Grant Street