

Eveleth's Birth and Boom: 26 Years in 26 Minutes



1892–1918

Tucker Nelson
September 15, 2018

1892

✧ July: David T. Adams discovered iron ore northwest of the present city

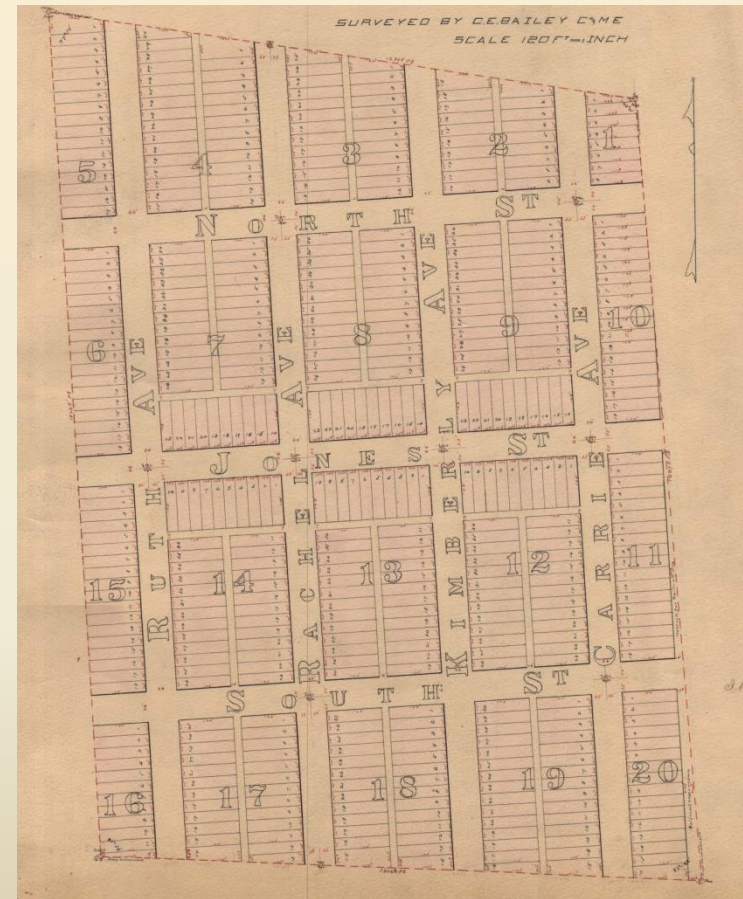


NE MN Historical Collections, UMD

✧ October: First buildings erected near present-day Northside Park

1893

- ❧ April 22: First townsite plat filed
- ❧ Saloon, hotel, boarding house were main buildings
- ❧ Population shrank due to a financial panic
- ❧ August 26: Village officially incorporated



1894

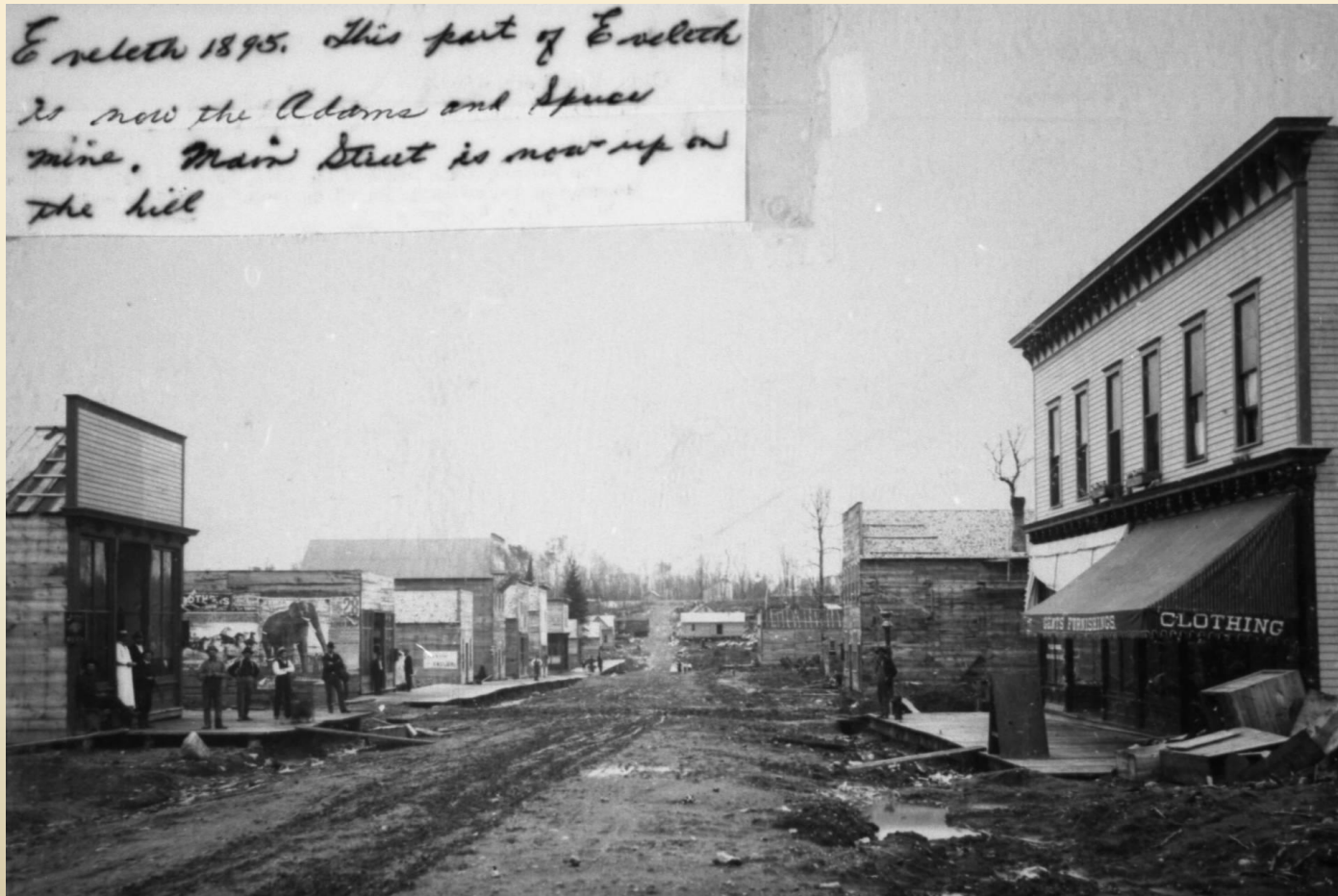
- ❧ Dr. Charles W. More arrived in Eveleth
- ❧ October: First church service held in the back of a drug store
- ❧ October 18: First village election
- ❧ Jail built
- ❧ Duluth and Iron Range Railroad spur built

1895

- ❧ Duluth, Missabe, and Northern Railroad came to town
- ❧ First school opened
- ❧ Volunteer Fire Company of 15 members organized
- ❧ Water and sewer system built
- ❧ February: First edition of *Eveleth Star* published, Hotel McInnis opened



Jones and Kimberly, 1895



1896

- ❧ Village flooded
- ❧ Electric light plant completed
- ❧ Village Hall built
- ❧ March: Methodist Episcopal church built
- ❧ May: First Catholic Mass held at the village hall
- ❧ August 31: First Addition to Eveleth platted



1897

❧ Water works extended

❧ Addition to Spruce School built



Iron Range Historical Society

1898

- ❧ Mesaba Telephone Company organized
- ❧ First edition of the *Eveleth Republican* published
- ❧ Plans made to move Eveleth

EVELETH REPUBLICAN.

EVELETH, ST. LOUIS COUNTY, MINNESOTA, SATURDAY, DECEMBER 24, 1898.

1899

❧ First buildings moved up the hill

❧ Auburn School moved to Fayal

❧ Fabiola Hospital built

❧ October 22: First Holy Family Catholic Church
dedicated



NE MN Historical Collections, UMD



NE MN Historical Collections, UMD

1900

- ❧ Census population: 2,752
- ❧ Most buildings had been moved from Old Town
- ❧ Fayal Mine was the largest producer by tonnage of any mine in the world
- ❧ October 6: Spruce Mine powder magazine exploded



1901

- ❧ Population estimate: 3,500
- ❧ 62 telephone subscribers
- ❧ First National Bank established
- ❧ October: Finnish Lutheran church dedicated (later named Concordia, Christ, United in Christ)



1901

☞ More Hospital opened

☞ New Fayal School completed



NE MN Historical Collections, UMD

NE MN Historical Collections, UMD

1902

- ❧ April 1: Eveleth incorporated as a city
- ❧ April 16: Jail burned to the ground, DM&N depot destroyed in botched robbery



NE MN Historical Collections, UMD

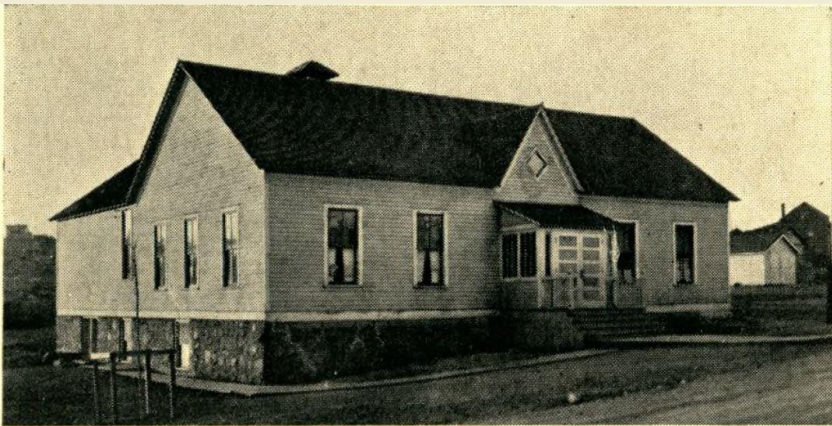
1902

- ❧ May 31: First edition of the *Eveleth Mining News* published
- ❧ Mae E. Trezona was Eveleth's first high school graduate
- ❧ 150 telephone subscribers
- ❧ Urania Hall built
- ❧ Fayal addition platted
- ❧ November 2:
Presbyterian Church dedicated



1903

- ❧ Population estimate: 6,500
- ❧ “Retail clerks formed union to induce merchants to close stores at 8 p.m. except Saturdays and pay days”
- ❧ Miners National Bank opened
- ❧ Adams and Fayal Kindergartens built



ADAMS KINDERGARTEN



FAYAL KINDERGARTEN

1903

- ❧ January 23: First recorded hockey game in Eveleth
- ❧ February 11: Two men died in a fire at the Spruce Mine
- ❧ March 23: McNeil Hotel opened
- ❧ April 22: Common School District No. 39 formed

DINNER		
SUNDAY MAY 8, 1904.		
— SOUP —		
Scotch Broth		
Green Onions		Queen Olives
— FISH —		
Boiled Salt Mackerel, Drawn Butter		
Potatoes au Natural		
— BOILED —		
Sugar Cured Ham with Spinach		
Boiled Potatoes		
— ROASTS —		
Sugar Corn	Prime Beef, au Jus	Mashed Potatoes
Saddle of Lamb with Apple Marmalade		
Baked Sweet Potatoes		Escalloped Tomatoes
— ENTREES —		
Chicken Saute with Green Peas		
Lobster Salad		
— DESSERT —		
Apple Pie		Lemon Pie
Strawberry Ice Cream		
American Cheese,		
Assorted Cake		
Bananas		
N. B. C. Crackers		
Tea	Milk	Coffee
DRINKING WATER—MELTED ICE FROM ST. MARY'S LAKE.		

1904

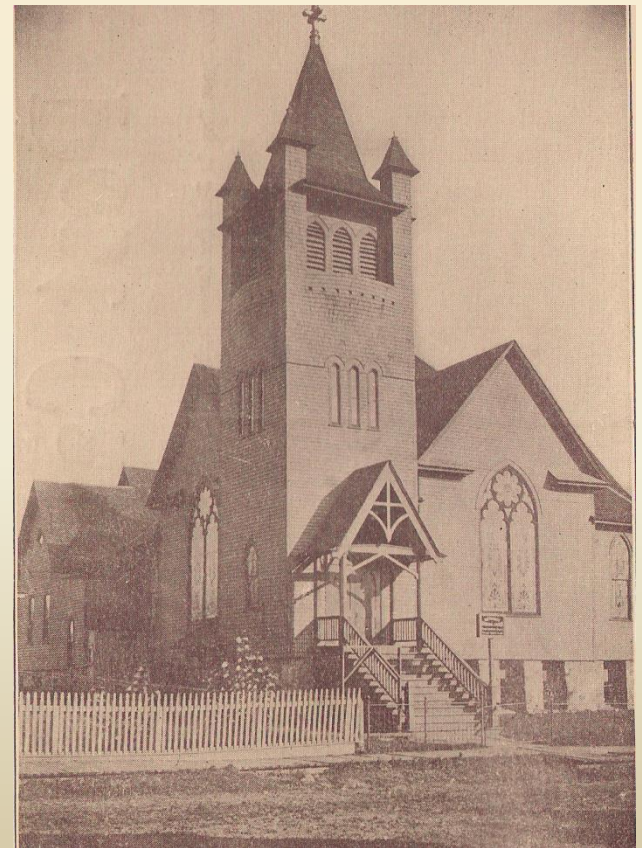
- ❧ School enrollment: Just under 800
- ❧ Four high school graduates
- ❧ Site approved for new \$50,000 high school
- ❧ Gun club, horsemen's club, and baseball club organized

1904

- ❧ August 7: First mass held at St. Patrick's Catholic Church
- ❧ August 21: Enlarged Methodist Church dedicated



NE MN Historical Collections, UMD



1905

- ❧ Eveleth Business Men's Association formed
- ❧ City limits extended to include the McNeil Hotel, the Fayal School, and the new high school
- ❧ Park Board established, ball park created
- ❧ Police force increased to four
- ❧ October 8: St. John's Episcopal Church dedicated
- ❧ November: New water plant completed

1905



NE MN Historical Collections, UMD

❧ November 10: Eveleth's first brick high school dedicated

1906

- ❧ New City Hall completed
- ❧ Monitor Hall, Swedish gathering place, built
- ❧ Fence built at ball park
- ❧ *Mining News* became *Eveleth News*



1907

- ❧ Sandstone curbs and concrete sidewalks installed on Grant Avenue
- ❧ 10-day miners' strike began on July 20
- ❧ Dr. More owned the first automobile in Eveleth



NE MN Historical Collections, UMD

1908

- ❧ Adams School completed
- ❧ National Guard Company F organized
- ❧ McNeil Hotel became Hotel Glode
- ❧ June 26: High School destroyed by fire



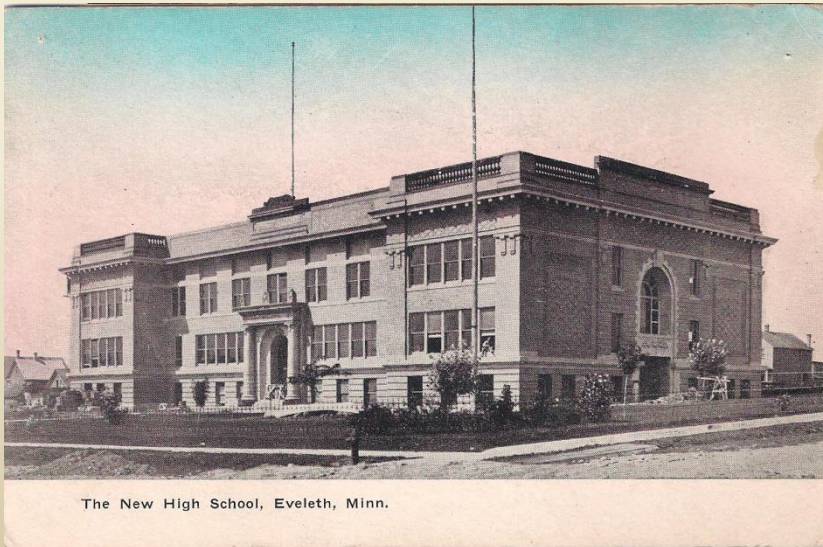
NE MN Historical Collections, UMD



Iron Range Historical Society

1909

- ❧ June 10: Eveleth Curling Club organized
- ❧ New 300,000 gallon water tower built east of the ball park
- ❧ New high school opened
- ❧ School enrollment: 1,279 students, 34 teachers



1910

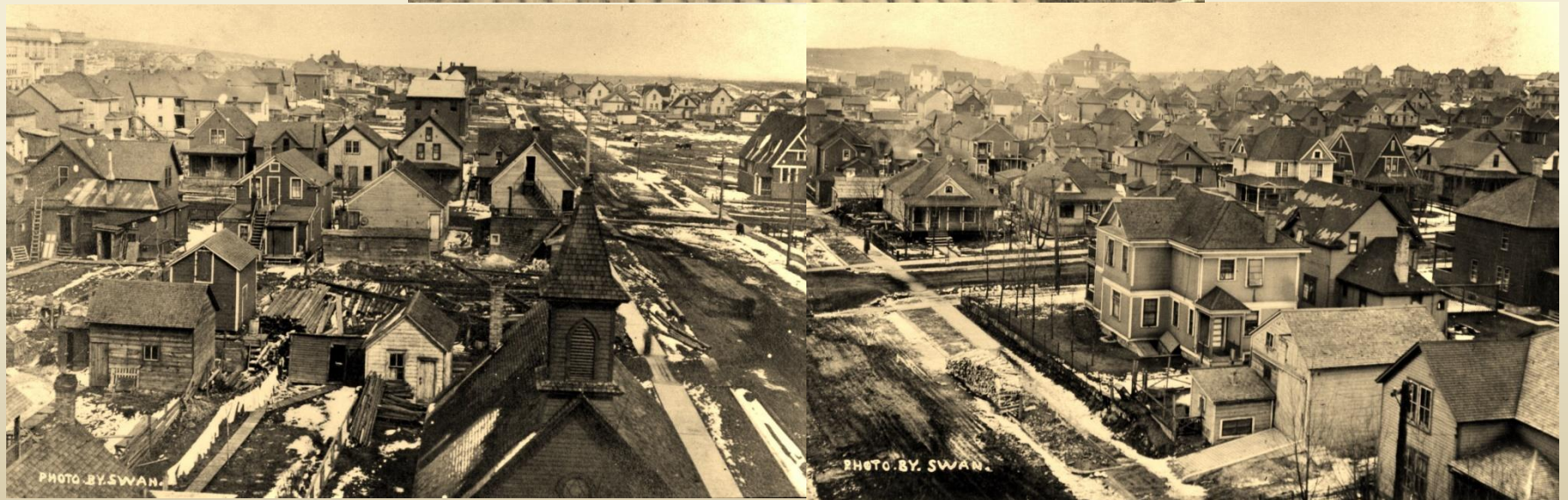
- ❧ Census population: 7,205
- ❧ Grant Avenue paved with granitoid



1910

- ❧ School district organization changed from common to independent
- ❧ Business Men's Association became Eveleth Commercial Club
- ❧ April 8: City limits extended with Central Division No. 2, Highland Addition, and Northside Division
- ❧ May 29: Holy Family Catholic Church dedicated

1910



Iron Range Historical Society

1911

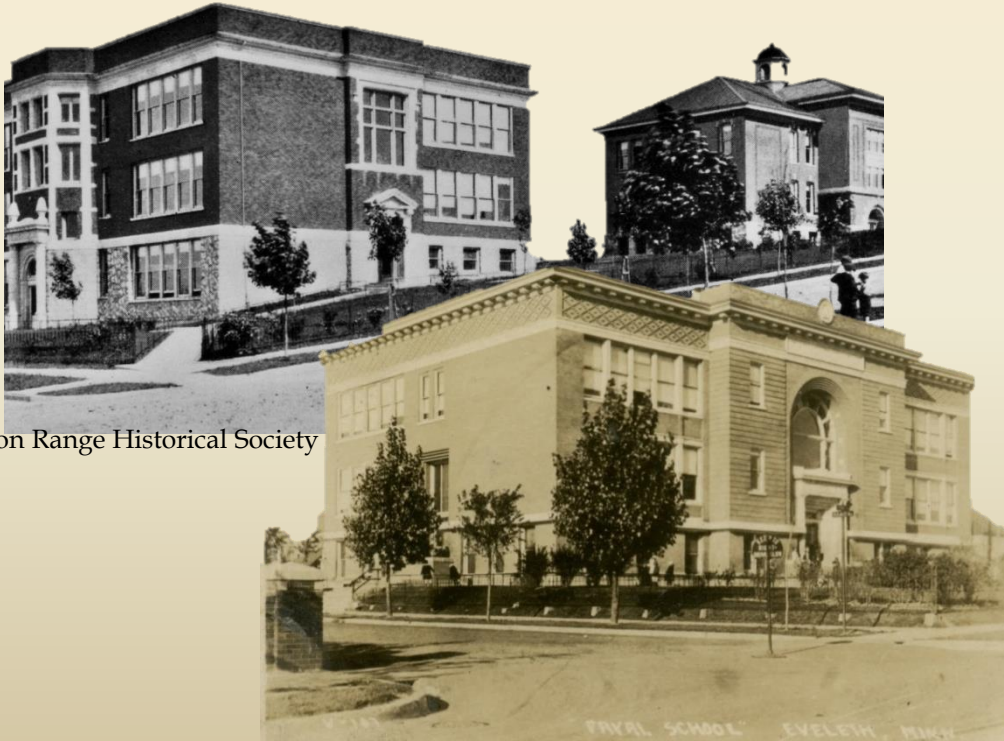
❧ April 7: Othello Theatre and *Eveleth Star* office destroyed by fire

❧ April 25: Fayal School burned to the ground



1912

- ❧ New Fayal and Lincoln schools completed
- ❧ Detention Hospital opened near water tower
- ❧ Land purchased for Central (later Memorial) Park
- ❧ November 22: Auditorium and Fire Hall opened



Iron Range Historical Society

1913

- ❧ New city charter approved, commission form of government adopted
- ❧ Mesaba Electric Railway fully operational
- ❧ Construction began on the new public library

1914

- ❧ New Miners National Bank building completed
- ❧ Manual Training School built
- ❧ July 1: Public Library opened
- ❧ August 14: First burial at new cemetery



1915

- ❧ First Eveleth High School newspaper and yearbook published
- ❧ 3,000 trees planted around town
- ❧ Eveleth's first Boy Scouts met at the Fayal School
- ❧ Church of the Immaculate Conception built
- ❧ September: New Methodist Episcopal Church completed

1916

- ❧ February: Domestic science classes held in former residence at 804 Jones Street
- ❧ Tennis courts built at the Fayal School
- ❧ First high school agriculture classes taught
- ❧ June 19: Company F called to the Mexican border



1917

- ❧ Eveleth Municipal Band established
- ❧ Ely Lake park land purchased
- ❧ Construction began on the new senior high school



1918

- ❧ May 9: Senior High School dedicated
- ❧ People's State Bank incorporated
- ❧ Junior College established in high school building
- ❧ 16 men from Eveleth died in WWI
- ❧ Recreation Building nearly completed



JUNIOR COLLEGE AND SENIOR HIGH SCHOOL



Sources

- ❧ Eveleth Heritage Committee, *Heritage of our Churches*, 2003
- ❧ Eveleth High School and Junior College, *The Open Pit*, 1926
- ❧ More, Charles W. “Early History of Eveleth Public Schools,” 1926
- ❧ More, Margaret *History of Eveleth, Minnesota*, 1947
- ❧ Perham, George A. “Eveleth Chronology to 1911,” 1925
- ❧ Tobin, Leslie J. “Eveleth Firsts,” 1937
- ❧ Tobin, Leslie J. “History of the Schools,” 1947
- ❧ Van Brunt, Walter *Duluth and St. Louis County Vol. II*, 1922

Acknowledgements

❧ Eveleth Public Library

❧ Eveleth Heritage Committee

❧ Photographs provided by the Eveleth Heritage
Committee unless other wise noted

❧ Other photos courtesy of

❧ Archives and Special Collections, Kathryn A. Martin
Library, University of Minnesota Duluth

❧ Iron Range Historical Society